

EAN: 6414150070037

www.oras.com/en/products/oras/product/2720F



Kitchen faucet with easy-grip levers for hot and cold water, touchless function, high swivel spout and aerator. The flow-rate of hot and cold water is adjusted by separate levers. Spout's swing angle is factory preset at 120° (can be limited to 60° or 80°). The touchless function is turned on by taking hands within the recognition range. The water temperature for the touchless function is adjusted by turning the ring between the faucet and the spout. Touchless function can be easily switched on/off. Battery operated, 3 V. The faucet is equipped with litter filters.

F = with flexible pipes

- Kitchen
- Hybrid, Two-grip, Touchless, Battery-operated
- Deck mounted
- Chrome
- Swivel spout
- Easy-Grip Lever
- Litter filter(s)
- body made of DZR brass, surfaces in contact with drinking water contain less than 0.3% lead, waterways without nickel coating

Technical data

Flow properties

Flow-rate at 300 kPa	0.2 l/s
Pressure loss with flow (0.2 l/s)	290 kPa

Technical properties

Hot water supply	max. +70°C
Working pressure	100 - 1000 kPa
Connection size	G3/8
Projection	193 mm
Material	brass

Software settings

Max. flow period	40 s
------------------	-------------

Electronic properties

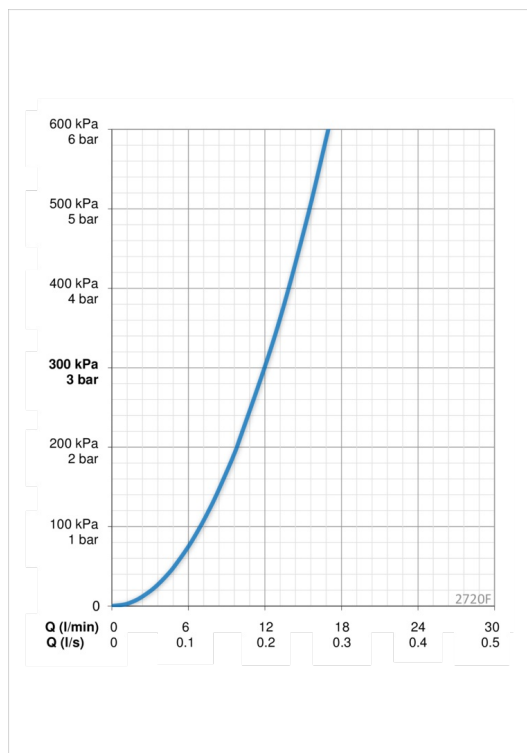
Battery	AA 1.5 V Lithium x 2
---------	-----------------------------

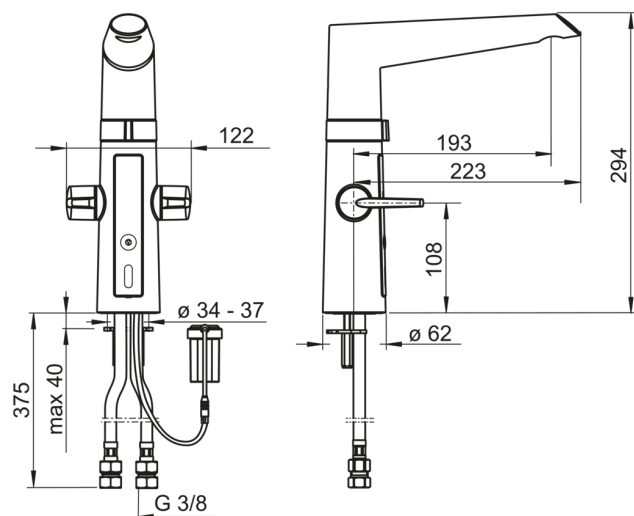
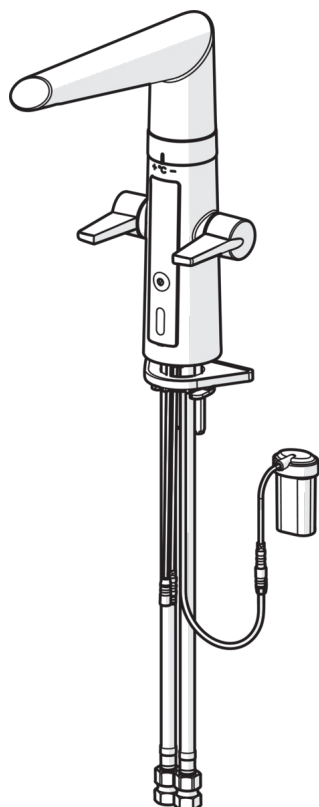
Regulations

EMC Directive	CE 2004/108/EY
EN standard	EN 15091 , EN 817
Noise class	I (ISO 3822)
Protection class	IP 54

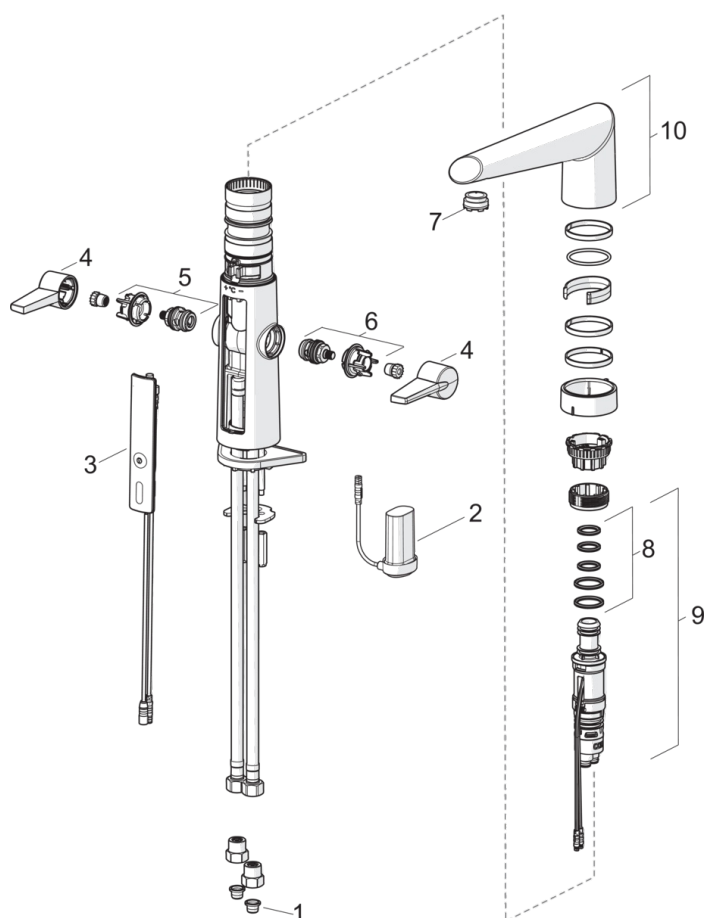
Type approvals

STF certificate	VTT-RTH-00008-14
ETA-Danmark	VA 1.42/20422
Sintef	Sintef Nr. 3083
KIWA SE	1462





Spare parts



SP2720F

	Code
01	199257/2
02	600617V
03	601227V
04	601094/2
05	601092V
06	601091V
07	601287V
08	601072V
09	601106V
10	601103V