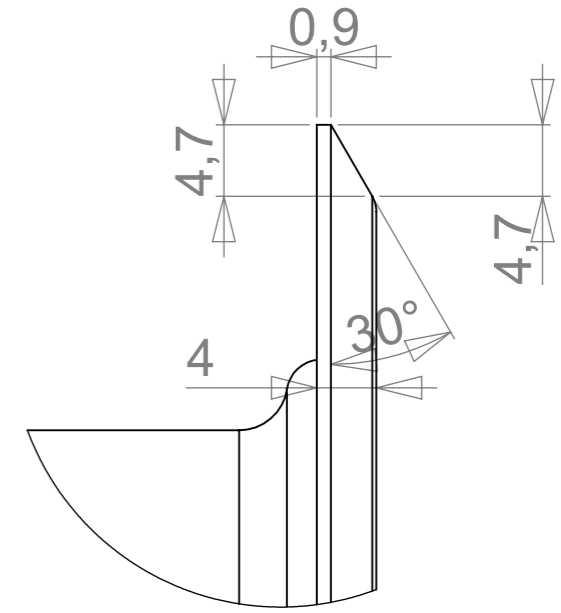
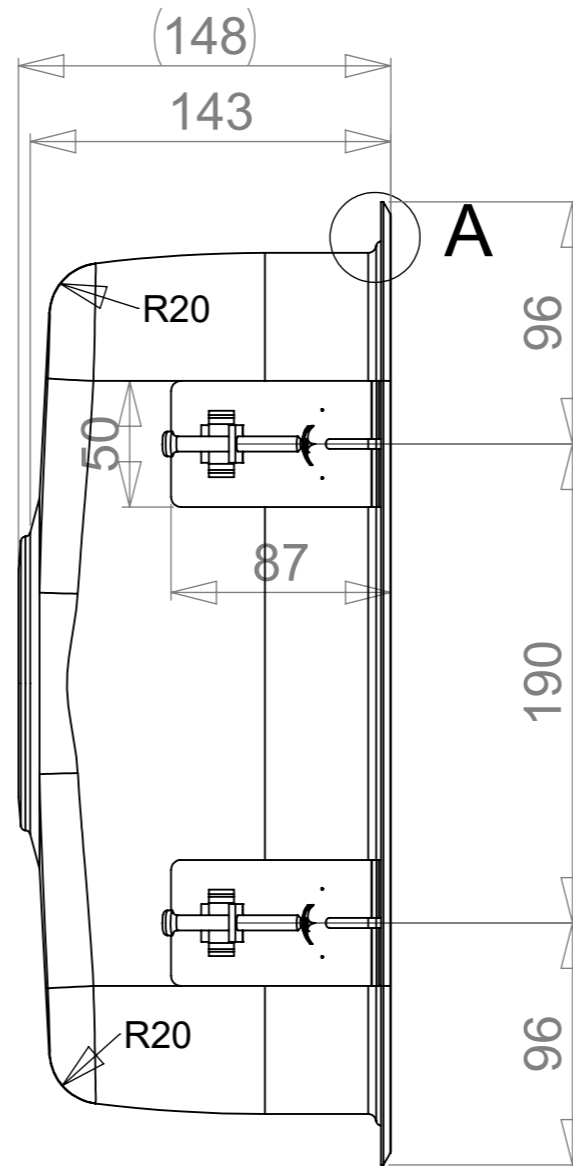
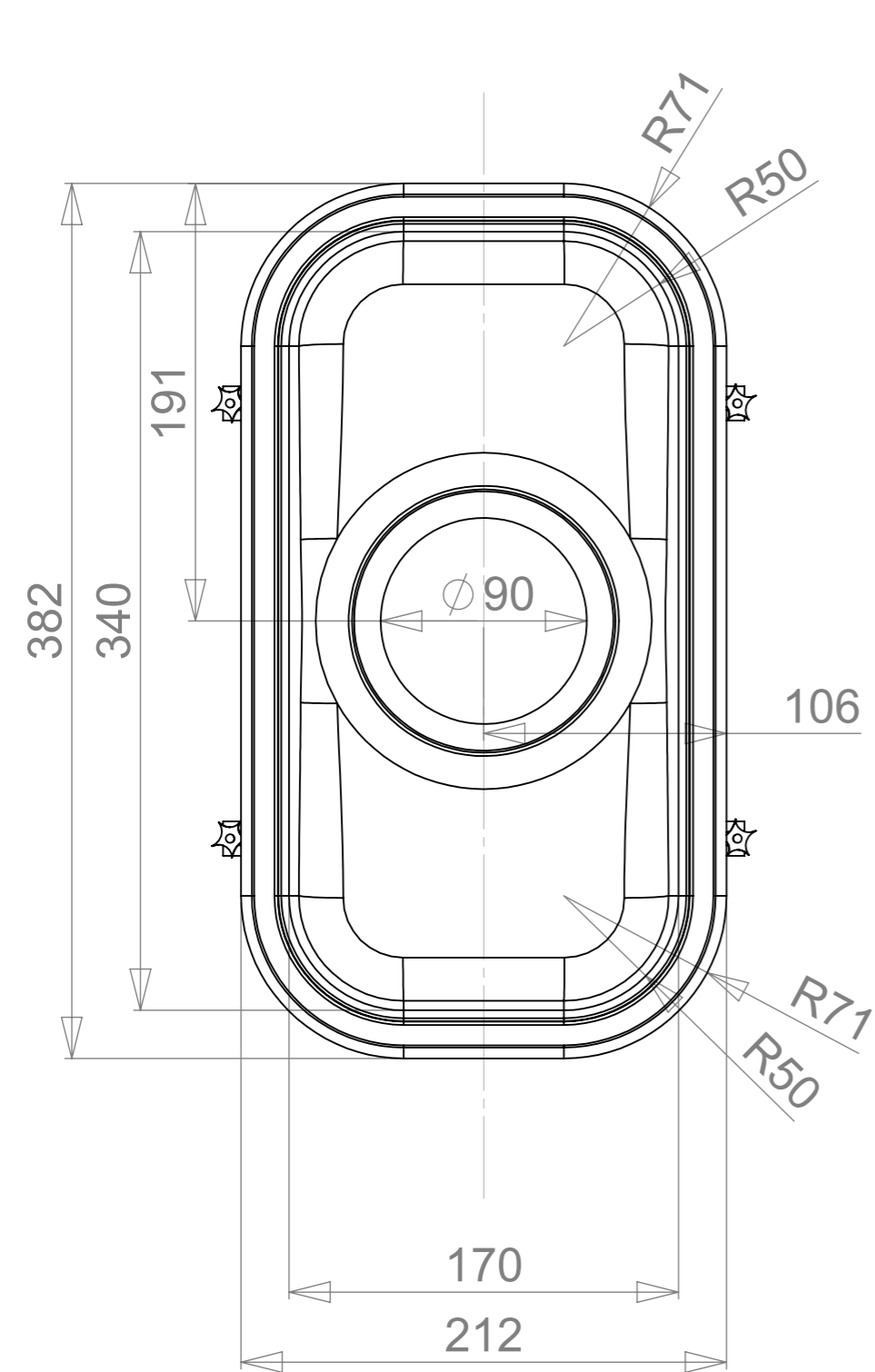
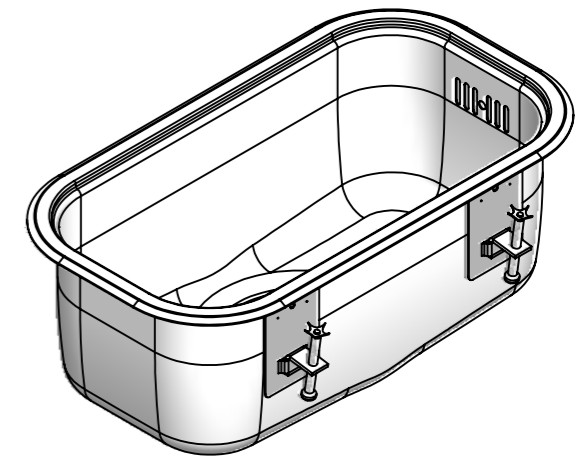


MAIN DIMENSIONS



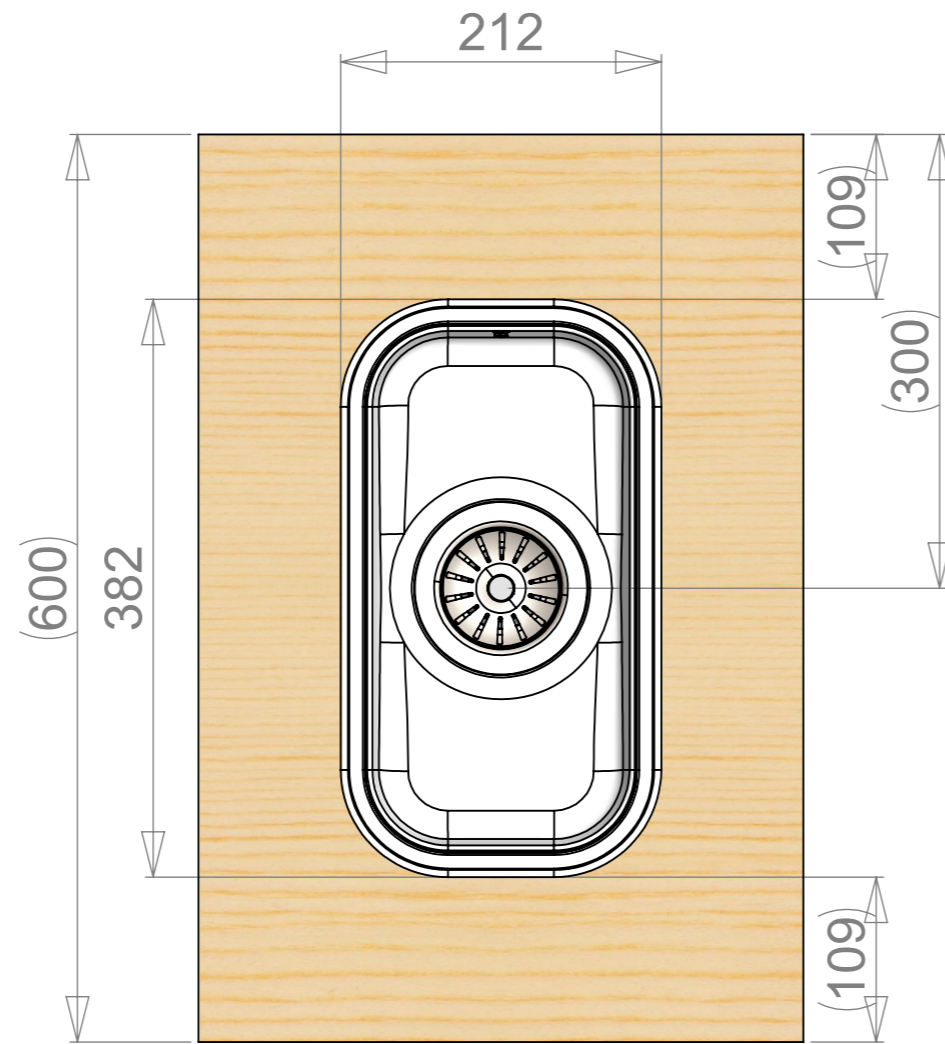
A (2 : 1)





REVISION	Muutos	Pvm	AUTHOR
-		25.3.2019	villes+

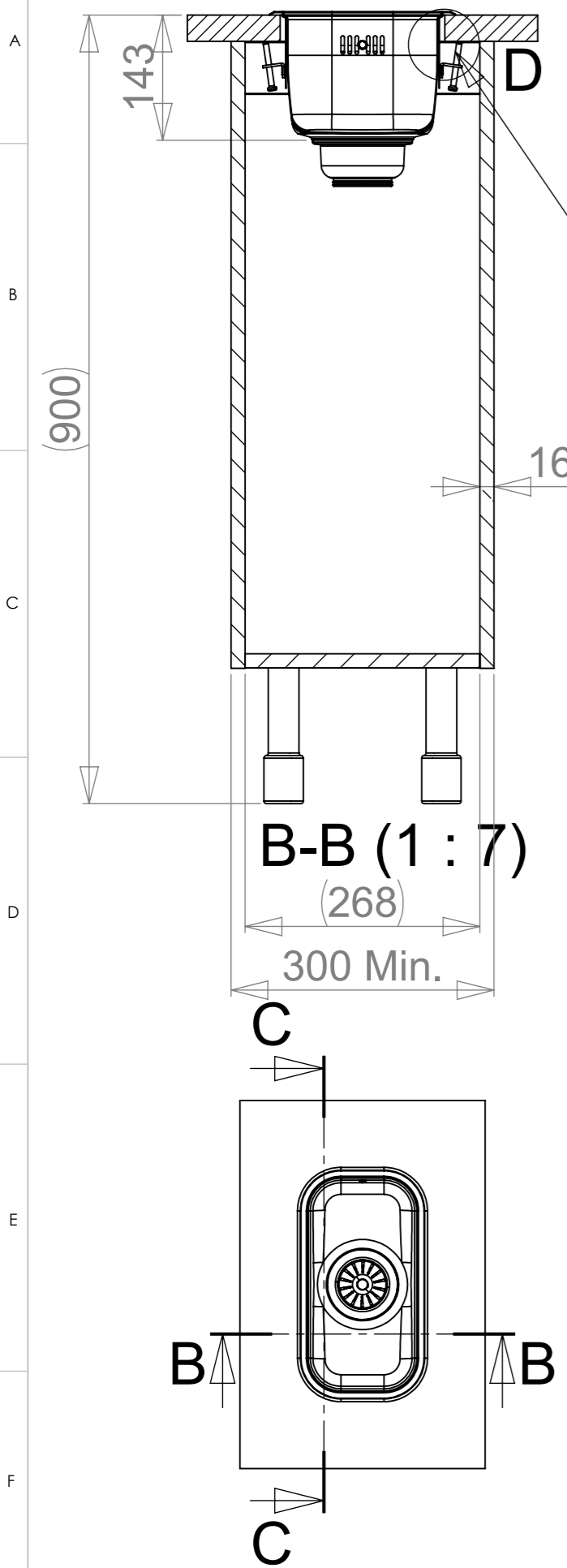
	Massa	kg	Yleistoleranssi	Suunnittelija	Pvm
	Mittakaava	1:3	Nimike	VS	21.03.2019
 www.stala.com			Nimitys	Tarkastaja	Pvm
			P-17PT, R50	Piirustusnumero	Sivu
			Technical Data Sheet	<b>18227</b>	1/6
				Rev	-

WORKTOP ASSEMBLY

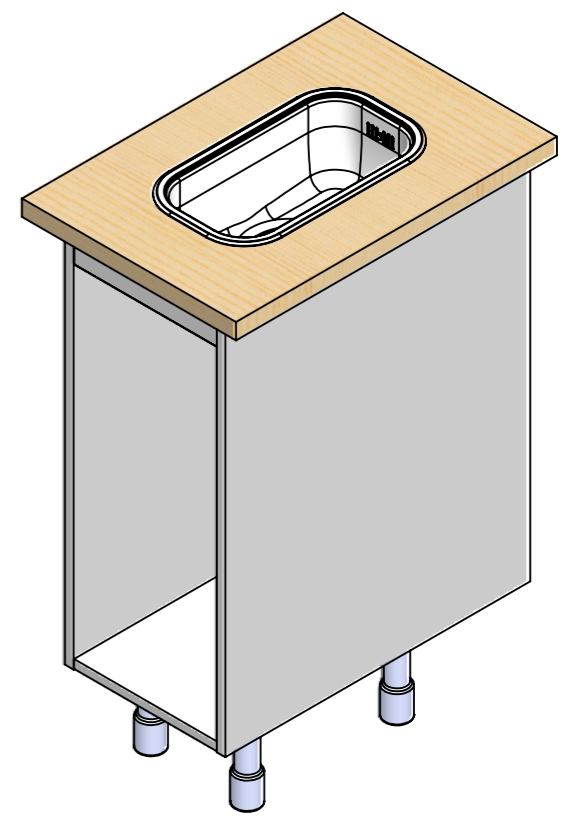
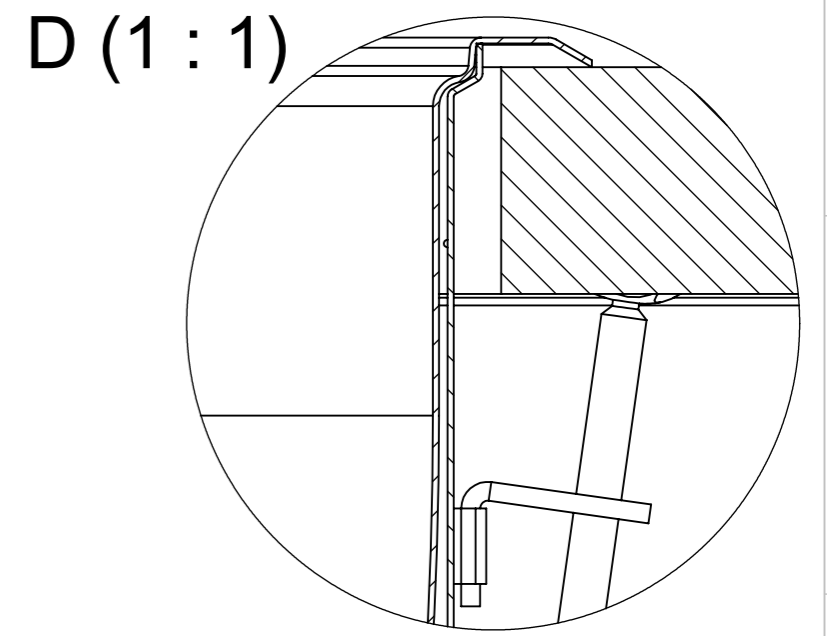
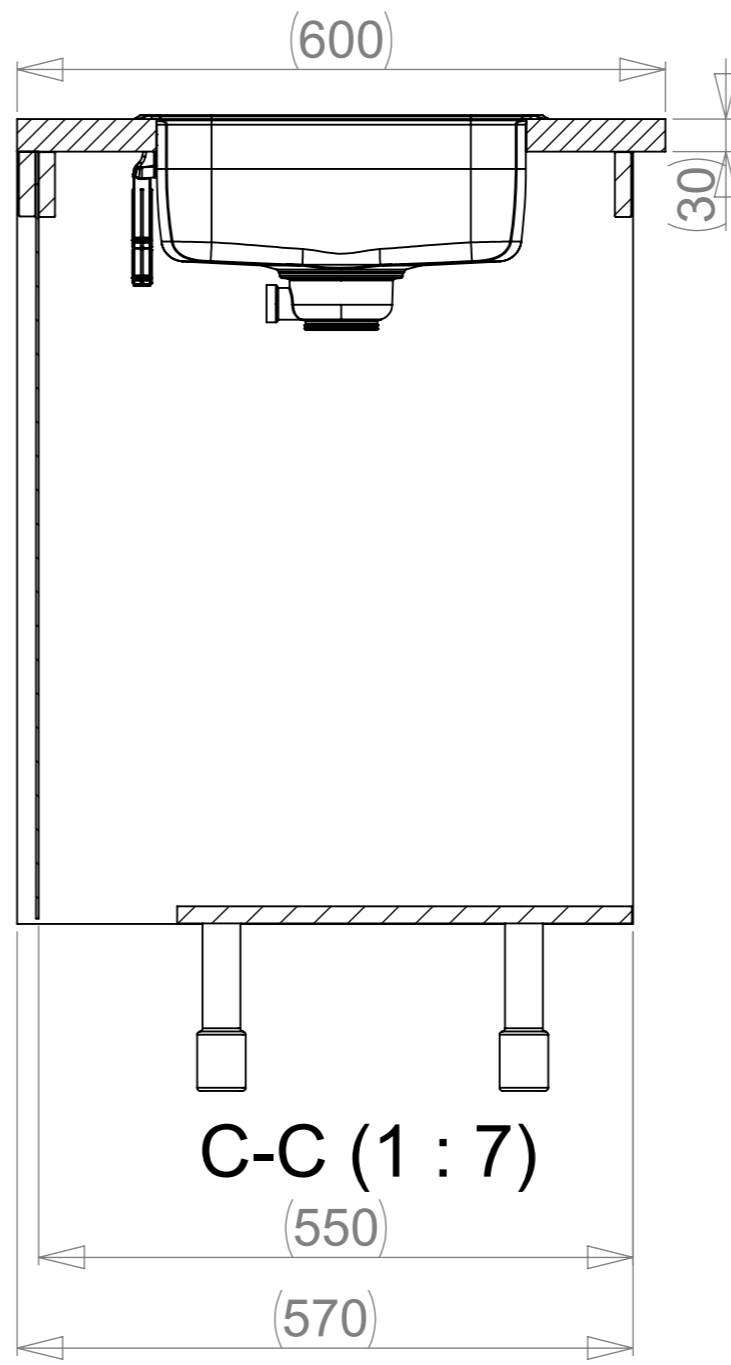


	Massa	Yleistoleranssi	Suunnittelija	Pvm
		kg	VS	21.03.2019
	Mittakaava	Nimike	Tarkastaja	Pvm
	A3 1:5			
 <a href="http://www.stala.com">www.stala.com</a>	Nimitys	Piirustusnumero	Sivu	
	P-17PT, R50 Technical Data Sheet	18227	2/6	
			Rev	-

SPACE REQUIREMENTS

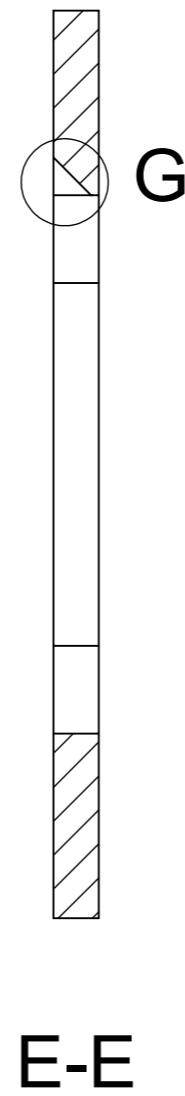
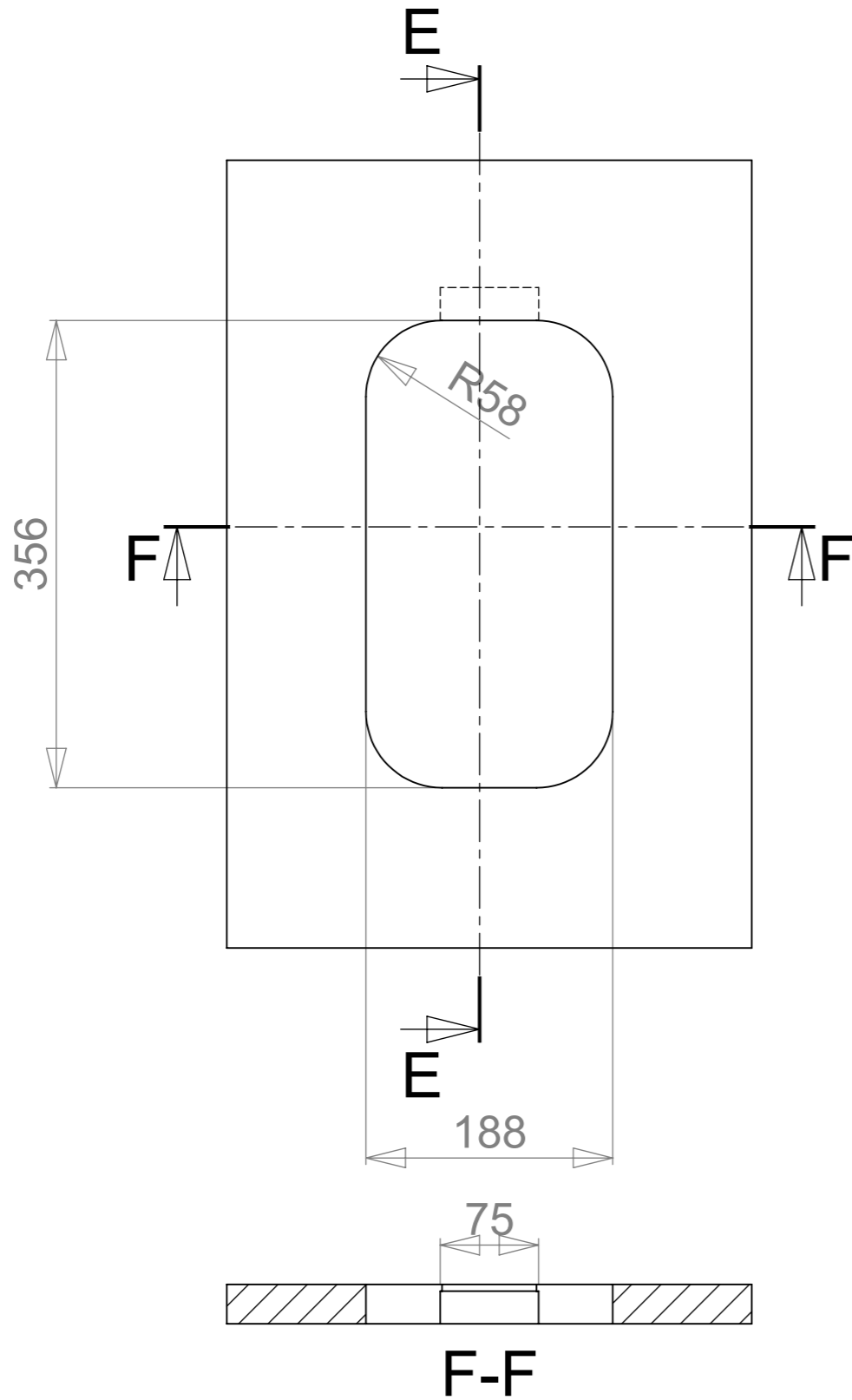


Huom!  
 Tarvittaessa kaapin väliseinää ja etu/takalistaa lovetettava kiinnikkeitä varten ja pesuallas on kiinnitettävä ennen työtason asennusta.  
 Obs!  
 Vid behov måste en inskärning för hofästena göras i skåpets mellanvägg och förbindningslist och diskbänken måste fästas innan du monterar bänkskivan.  
 Notice!  
 The partition walls and front/back list of the cupboard must be notched for the sink mountings when needed and the sink must be fastened before installing the worktop.

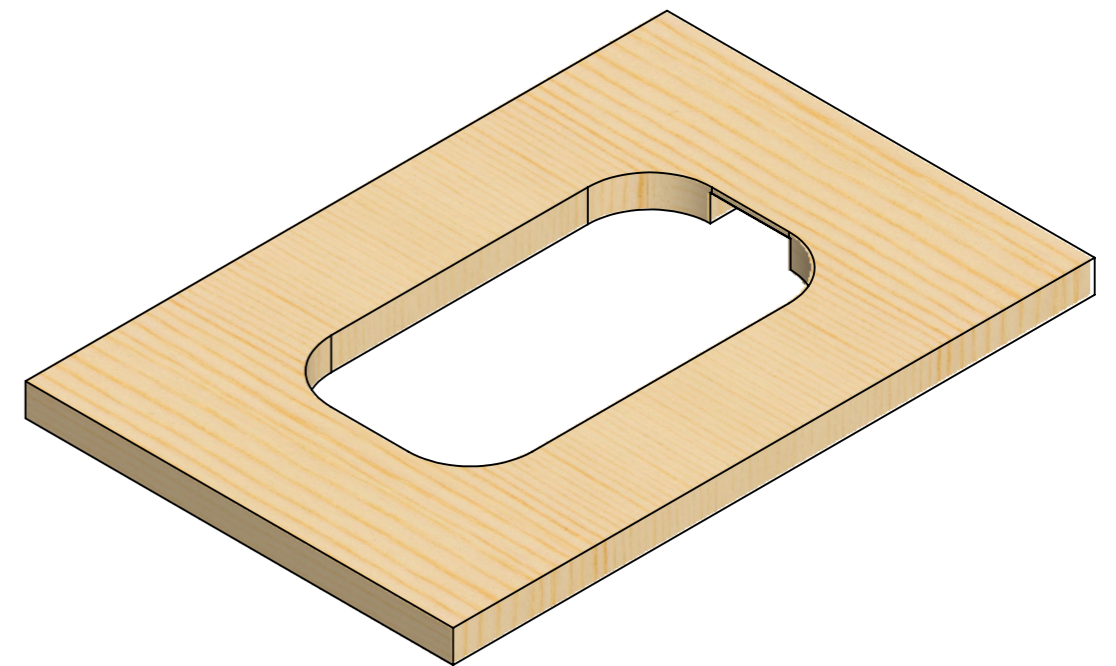
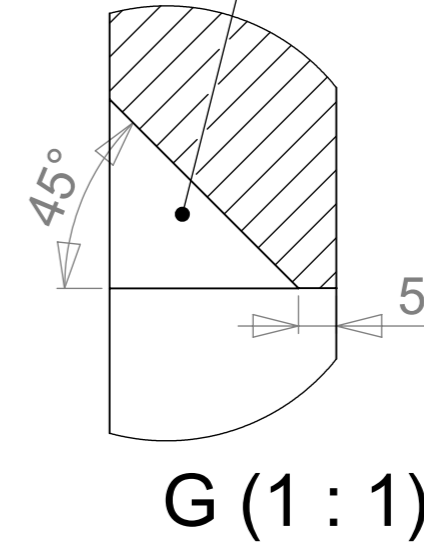


	Massa kg	Yleistoleranssi	Suunnittelija	Pvm
	Mittakaava A3 1:10	Nimike	VS	21.03.2019
 www.stala.com	Nimitys	Tarkastaja	Pvm	
	P-17PT, R50	Piirustusnumero	Sivu	3/6
	Technical Data Sheet	<b>18227</b>	Rev	-

CUT OUT



Cut out for overflow



	Massa	Yleistoleranssi	Suunnittelija	Pvm
	kg		VS	21.03.2019
	Mittakaava	Nimike	Tarkastaja	Pvm
	A3	1:5		
 www.stala.com	Nimitys	Piirustusnumero	Sivu	
	P-17PT, R50	18227	4/6	
	Technical Data Sheet		Rev	-

