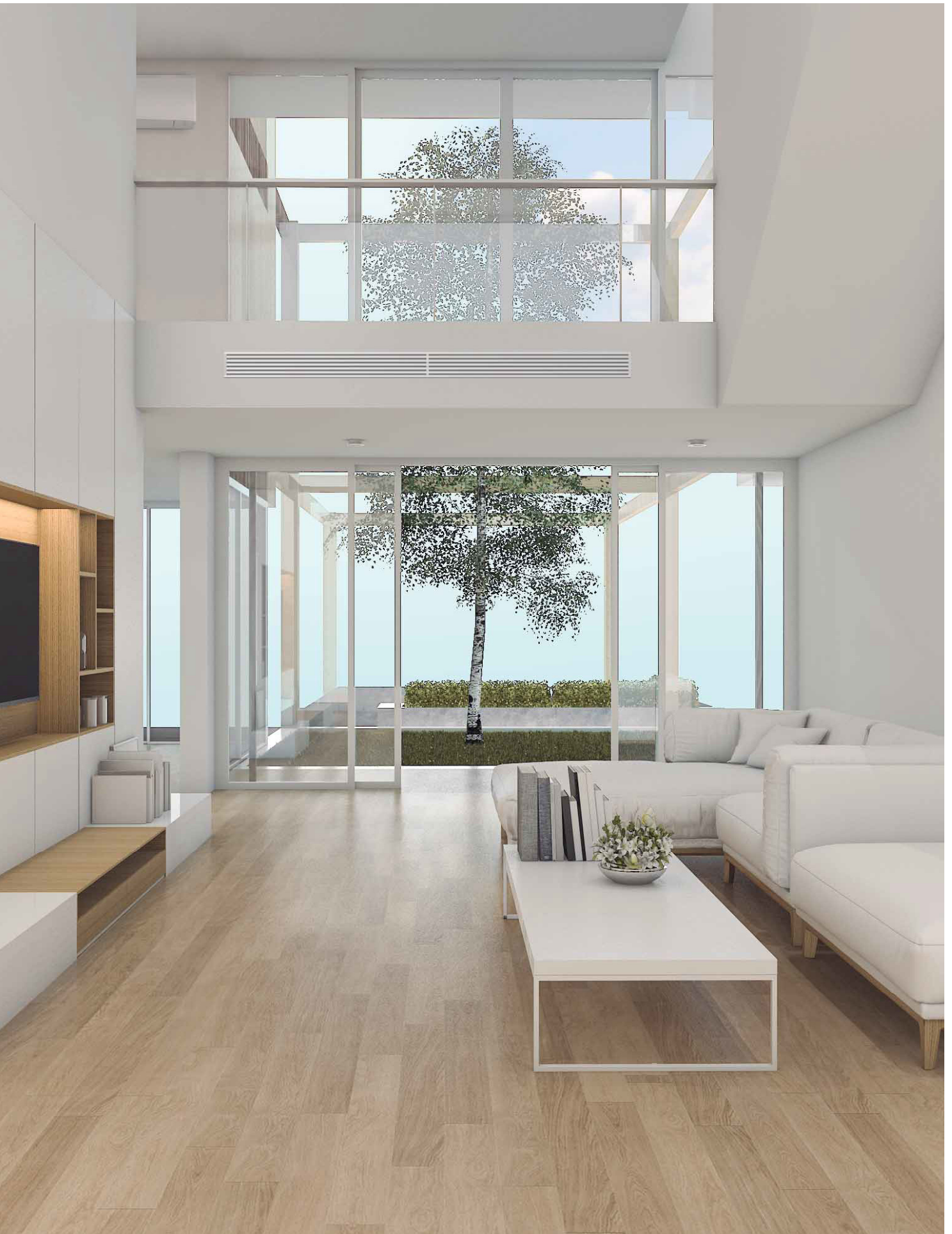
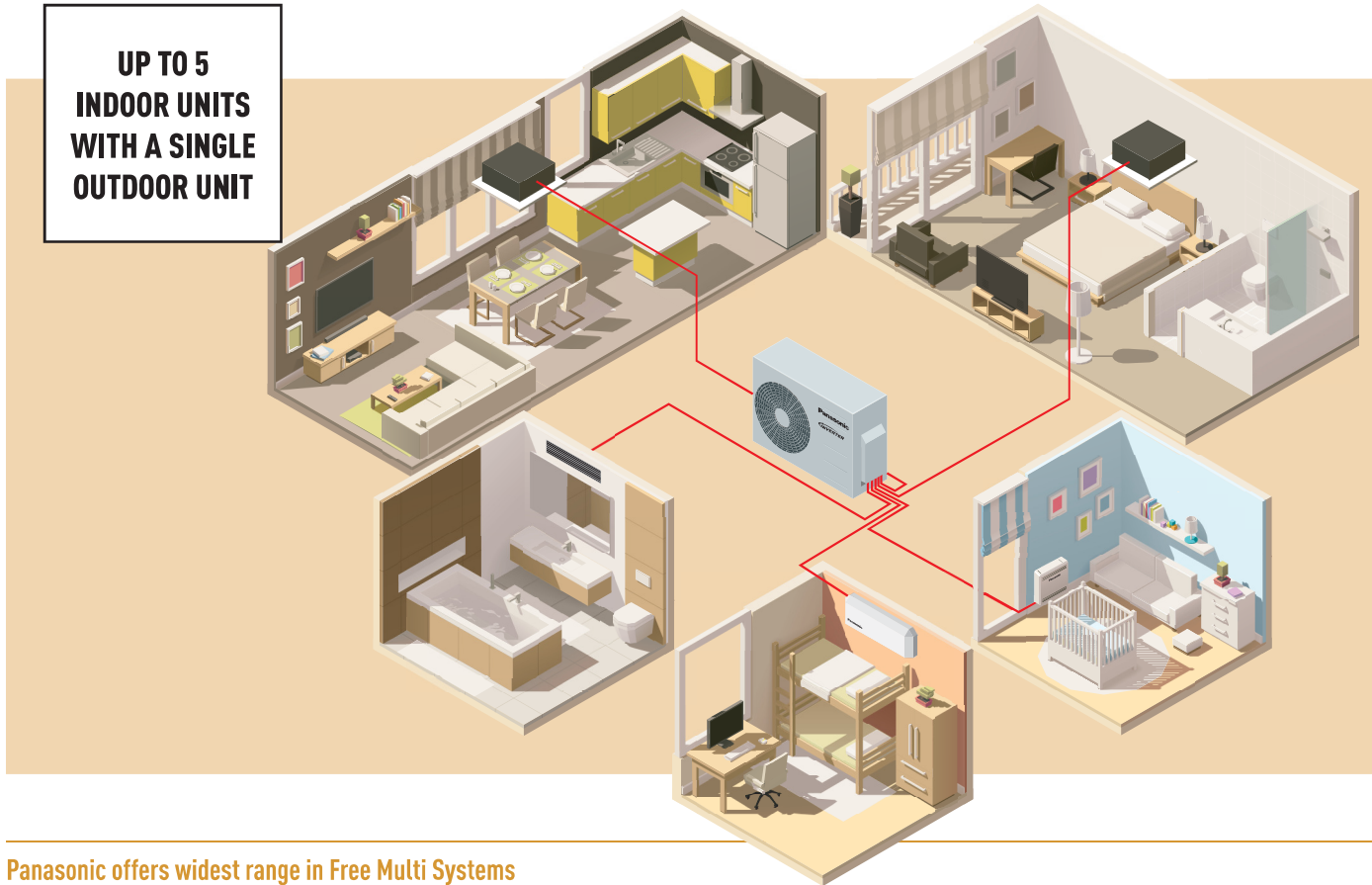


FREE MULTI SYSTEM



**UP TO 5
INDOOR UNITS
WITH A SINGLE
OUTDOOR UNIT**



Panasonic offers widest range in Free Multi Systems

Free Multi System range from 3,50 to 9,00 kW for 5 indoor units with one outdoor unit.

Free Multi Z

Full flexibility up to 9,00 kW and up to 5 ports with wide range of indoor units including high performance Etherea indoor units, reaching up to A+++ / A++

Why a Free Multi System is better than several separate split units

Up to 5 indoor units with a single outdoor unit.

- Just one compact outdoor unit
- Increased comfort in the house since every room has its own indoor unit for heating

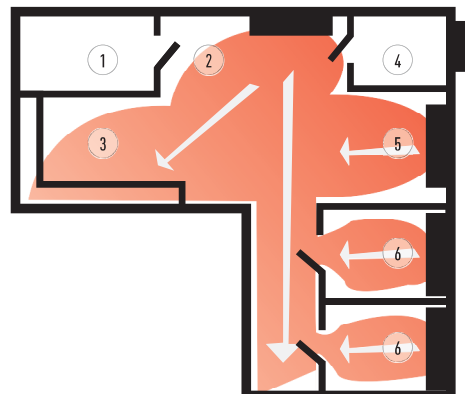
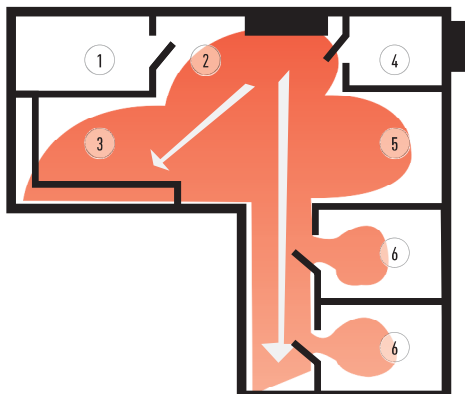
- Much more powerful than a single split
- More efficient since the units are always operating at full capacity
- You can connect all types of indoor units, such as wall types and consoles, depending on what suits your house best

Solution with single split.

One indoor unit is connected to one outdoor unit. The indoor unit is placed in the main hallway and heats the entire house. Certain rooms may not be perfectly heated, which causes inadequate comfort.

Solution with Free Multi System.

With one outdoor unit, you can connect up to five indoor units. There is one indoor unit per room or area. It gives an extreme increase in comfort levels. On the roof, there is only one outdoor unit.



1. Laundry room

2. Entrance

3. Kitchen/dining area

4. Bathroom

5. Living room

6. Bedroom

Free Multi System Z

R32



Wall Mounted TZ Compact Style	Indoor unit	Cooling capacity	Heating capacity	Connection in. / out.	Sound pressure ¹	Dimension / Net weight	Piping connections	
		kW / kCal/h	kW / kCal/h		mm ²	Cool — Heat (Hi/Lo/S-Lo)	HxWxD	Liquid / Gas pipe
						dB(A)	mm / kg	Inch (mm)
1,60 kW	CS-MTZ16TKE	1,60/1380	2,60/2240	4 x 1,5	38/27/22 — 39/28/24	290 x 799 x 197/8	1/4 (6,35) / 3/8 (9,52)	
2,00 kW	CS-TZ20TKEW-1	2,00/1720	3,20/2750	4 x 1,5	39/27/22 — 40/28/24	290 x 799 x 197/8	1/4 (6,35) / 3/8 (9,52)	
2,50 kW	CS-TZ25TKEW-1	2,50/2150	3,60/3100	4 x 1,5	42/28/22 — 42/29/24	290 x 799 x 197/8	1/4 (6,35) / 3/8 (9,52)	
3,50 kW ²⁾	CS-TZ35TKEW-1	3,50/3010	4,50/3870	4 x 1,5	44/32/22 — 44/35/24	290 x 799 x 197/8	1/4 (6,35) / 3/8 (9,52)	
4,20 kW	CS-TZ42TKEW-1	4,20/3610	5,00/4300	4 x 1,5	44/33/31 — 46/37/30	290 x 799 x 197/8	1/4 (6,35) / 3/8 (9,52)	
5,00 kW	CS-TZ50TKEW	5,00/4300	5,30/4558	4 x 1,5	44/39/36 — 46/39/36	302 x 1102 x 244/12	1/4 (6,35) / 3/8 (9,52)	
6,00 kW	CS-TZ60TKEW	6,00/5160	8,50/7310	4 x 1,5	44/39/36 — 47/39/36	302 x 1102 x 244/12	1/4 (6,35) / 1/2 (12,70)	
7,10 kW	CS-TZ71TKEW	7,10/6110	8,70/7482	4 x 1,5	49/40/37 — 49/40/37	302 x 1102 x 244/13	1/4 (6,35) / 1/2 (12,70)	



NEW Floor Console ³⁾ *	Indoor	Cooling capacity	Heating capacity	Connection in. / out.	Sound pressure ¹	Dimension / Net weight	Piping connections	
		kW / kCal/h	kW / kCal/h		mm ²	Cool — Heat (Hi/Lo/S-Lo)	HxWxD	Liquid / Gas pipe
						dB(A)	mm / kg	Inch (mm)
2,00 kW	CS-MZ20UFEA	2,00/1720	3,20/2750	4 x 1,5	39/27/22 — 39/27/21	600 x 750 x 207/13	1/4 (6,35) / 3/8 (9,52)	
2,50 kW	CS-Z25UFEAW	2,50/2150	3,60/3100	4 x 1,5	40/27/22 — 40/27/21	600 x 750 x 207/13	1/4 (6,35) / 3/8 (9,52)	
3,50 kW ²⁾	CS-Z35UFEAW	3,50/3010	4,50/3870	4 x 1,5	41/28/22 — 41/28/21	600 x 750 x 207/13	1/4 (6,35) / 3/8 (9,52)	
5,00 kW	CS-Z50UFEAW	5,00/4300	5,30/4558	4 x 1,5	44/33/29 — 48/35/31	600 x 750 x 207/13	1/4 (6,35) / 3/8 (9,52)	



NEW C BT20EW RAL9010 panel for 4 Way 60 60 Cassette (sold separately)



NEW 4 Way 60x60 Cassette*	Indoor / Panel	Cooling capacity	Heating capacity	Connection indoor / outdoor	Sound pressure ¹	Dimension / Net weight		Piping connections	
		kW / kCal/h	kW / kCal/h		mm ²	Cool — Heat (Hi/Lo/S-Lo)	Indoor HxWxD	Panel HxWxD	Liquid / Gas pipe
						dB(A)	mm / kg	mm / kg	Inch (mm)
2,00 kW	CS-MZ20UB4EA / CZ-BT20EW	2,00/1720	3,20/2750	4 x 1,5	35/27/24 — 36/30/27	260 x 575 x 575/18	51 x 700 x 700/2,5	1/4 (6,35) / 3/8 (9,52)	
2,50 kW	CS-Z25UB4EAW / CZ-BT20EW	2,50/2150	3,60/3100	4 x 1,5	36/27/24 — 37/30/27	260 x 575 x 575/18	51 x 700 x 700/2,5	1/4 (6,35) / 3/8 (9,52)	
3,50 kW ²⁾	CS-Z35UB4EAW / CZ-BT20EW	3,50/3010	4,50/3870	4 x 1,5	36/28/25 — 37/30/27	260 x 575 x 575/18	51 x 700 x 700/2,5	1/4 (6,35) / 3/8 (9,52)	
5,00 kW ⁴⁾	CS-Z50UB4EAW / CZ-BT20EW	5,00/4300	6,80/5850	4 x 1,5	39/30/27 — 40/31/28	260 x 575 x 575/18	51 x 700 x 700/2,5	1/4 (6,35) / 3/8 (9,52)	
6,00 kW	CS-Z60UB4EAW / CZ-BT20EW	6,00/5160	8,50/7310	4 x 1,5	44/34/31 — 45/34/31	260 x 575 x 575/18	51 x 700 x 700/2,5	1/4 (6,35) / 1/2 (12,70)	



NEW Low Static Pressure Hide Away*	Indoor	Cooling capacity	Heating capacity	Connection indoor / outdoor	Sound pressure ¹	Dimension / Net weight	Piping connections	
		kW / kCal/h	kW / kCal/h		mm ²	Cool — Heat (Hi/Lo/S-Lo)	HxWxD	Liquid / Gas pipe
						dB(A)	mm / kg	Inch (mm)
2,00 kW	CS-MZ20UD3EA	2,00/1720	3,20/2750	4 x 1,5	34/29/26 — 36/29/26	200 x 750 x 640/19	1/4 (6,35) / 3/8 (9,52)	
2,50 kW	CS-Z25UD3EAW	2,50/2150	3,60/3100	4 x 1,5	35/29/26 — 37/29/26	200 x 750 x 640/19	1/4 (6,35) / 3/8 (9,52)	
3,50 kW ²⁾	CS-Z35UD3EAW	3,50/3010	4,50/3870	4 x 1,5	35/29/26 — 37/29/26	200 x 750 x 640/19	1/4 (6,35) / 3/8 (9,52)	
5,00 kW ⁴⁾	CS-Z50UD3EAW	5,00/4300	6,80/5850	4 x 1,5	41/31/28 — 41/32/29	200 x 750 x 640/19	1/4 (6,35) / 3/8 (9,52)	
6,00 kW	CS-Z60UD3EAW	6,00/5160	8,50/7310	4 x 1,5	43/32/29 — 43/34/31	200 x 750 x 640/19	1/4 (6,35) / 1/2 (12,70)	

1) The sound pressure of the units shows the value measured of a position 1m in front of the main body. The sound pressure is measured in accordance with Eurovent 6/C/006 97 specification. 2) The heating capacity is 4,20 W connected to a C 2 35TBE. 3) Compatible only with 2 ports Outdoor C 2 35TBE / C 2 41TBE / C 2 50TBE. 4) The heating capacity is 5,30 W connected to a C 2 50TBE. Tentative data.

Free Multi 5x1 CU-5Z90TBE. Minimum capacity connected: 4,50 kW. Maximum capacity connected: 18,30 kW • R32 GAS

Table with columns: Indoor unit capacity, Cooling capacity (kW) Rooms, EER, SEER', Input power rating, A.E.C., Current, Heating capacity (kW) Rooms, COP, SCOP', Input power rating, A.E.C., Current. Rows include configurations like 50+60+71, 60+60+60, and various 4 Rooms setups.

Rating Conditions: Cooling Indoor 27 °C DB / 19 °C WB, Cooling Outdoor 35 °C DB / 24 °C WB, Heating Indoor 20 °C DB, Heating Outdoor 7 °C DB / 4 °C WB. (DB: Dry Bulb; WB: Wet Bulb) Specifications subject to change without notice. For detailed information about ErP / Energy Labelling, please visit our websites www.aircon.panasonic.eu or www.ptc.panasonic.eu.

Free Multi 5x1 CU-5Z90TBE. Minimum capacity connected: 4,50 kW. Maximum capacity connected: 18,30 kW • R32 GAS

Table with columns: Indoor unit capacity, Cooling capacity (kW) Rooms, EER, SEER', Input power rating, A.E.C., Current, Heating capacity (kW) Rooms, COP, SCOP', Input power rating, A.E.C., Current. Rows include configurations like 20+35+35+35, 20+35+35+42, etc.

Rating Conditions: Cooling Indoor 27 °C DB / 19 °C WB, Cooling Outdoor 35 °C DB / 24 °C WB, Heating Indoor 20 °C DB, Heating Outdoor 7 °C DB / 4 °C WB, (DB: Dry Bulb, WB: Wet Bulb) Specifications subject to change without notice. For detailed information about ErP / Energy Labelling, please visit our websites www.aircon.panasonic.eu or www.ptc.panasonic.eu.

Free Multi 5x1 CU-5Z90TBE. Minimum capacity connected: 4,50 kW. Maximum capacity connected: 18,30 kW • R32 GAS

Table with columns: Indoor unit capacity, Cooling capacity (kW) Rooms, EER, SEER', Input power rating, A.E.C., Current, Heating capacity (kW) Rooms, COP, SCOP', Input power rating, A.E.C., Current. Rows include various indoor unit configurations like 16+16+25+50+71, 16+16+25+60+60, etc.

Rating Conditions: Cooling Indoor 27 °C DB / 19 °C WB. Cooling Outdoor 35 °C DB / 24 °C WB. Heating Indoor 20 °C DB. Heating Outdoor 7 °C DB / 4 °C WB. (DB: Dry Bulb; WB: Wet Bulb) Specifications subject to change without notice. For detailed information about ErP / Energy Labelling, please visit our websites www.aircon.panasonic.eu or www.ptc.panasonic.eu.

FREE MULTI R32 COMBINATIONS TABLE

Free Multi 5x1 CU-5Z90TBE. Minimum capacity connected: 4,50 kW. Maximum capacity connected: 18,30 kW • R32 GAS

Table with columns: Indoor unit capacity, Cooling capacity (kW) Rooms, EER, SEER1, Input power rating, A.E.C. Current, Heating capacity (kW) Rooms, COP, SCOP1, Input power rating, A.E.C. Current. Includes multiple rows of capacity and energy efficiency data.

Free Multi 5x1 CU-5Z90TBE. Minimum capacity connected: 4,50 kW. Maximum capacity connected: 18,30 kW • R32 GAS

Table with columns for Indoor unit capacity, Cooling capacity (kW) Rooms, EER, SEER', Input power rating, A.E.C., Current, Heating capacity (kW) Rooms, COP, SCOP', Input power rating, A.E.C., Current. Rows list various unit configurations and their corresponding performance metrics.

11 Energy Label Scale from A+++ to D.