

Product Information

Name:

DCL plug

Technical Data: 6A 250V~

Frequency: 50Hz

Colour: Black

Main material: PC (Halogen free)

IP-Class: IP20

Working temperature: -25°C to +60°C

Installation temperature: -5°C to +25°C

Fire hazard test: 650°C/850°C (IEC60695-2-11)

The product complies with the standard(s):

EN61995-1: Standard

EN61995-2: Standard sheets

The product is in conformity with the provisions of the following European directive(s): LVD, RoHS, WEEE

Certificate(s): CE, Semko

Product info:

DCL is a new plug and socket system for the connection of fixed lighting equipment, related standard EN 61995 valid from 2009-08-24.

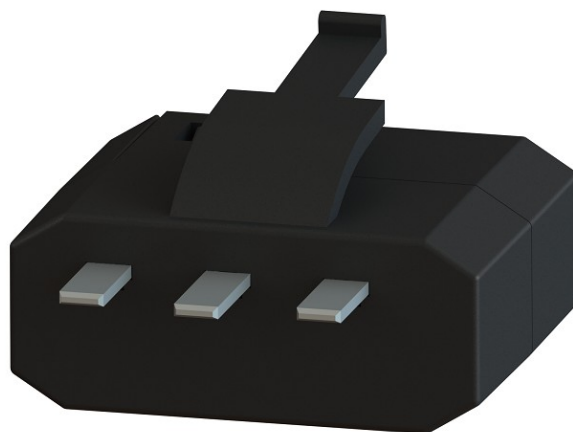
Technical info:

Rewirable.

With straight cable connection.

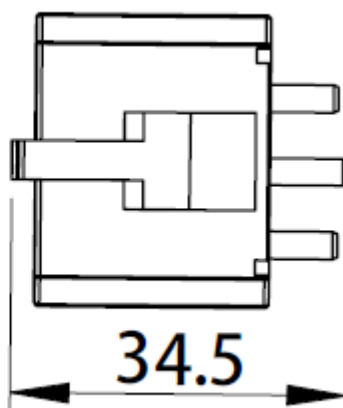
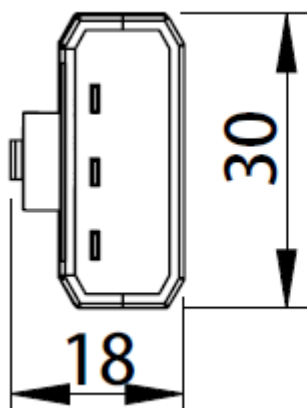
Screw terminals, for flexible conductor up to 1.5mm².

With cable fixation screw, for external dimensions of flexible cables up to Ø8.0mm.



E-No.	Type	Description/Remark
	U721	DCL plug, rewirable, earthed

Drawing



: +86 519 68868200

Fax : +86 519 86731098

E-mail :liufeng@etman.cn