

EAN: 6414150071362
www.oras.com/nl/products/oras/product/6662F-106



Touchless thermostatic shower panel with hand shower and a temperature adjustment handle. Battery-operated 6 V. The shower is switched on by placing a hand in front of the sensor within the recognition range. Water will flow for as long as the person is standing under the shower. When the user exits the recognition range the water flow will stop automatically. The shower panel is equipped with litter filters, non-return valves and a flow limiter.

Flow-rate 6.0 l/min.

The following accessories are sold separately: soap holder (Oras No. 199880) and grab bar (Oras No. 199881).

Fulfills the requirements for efficient use of water in green building.

- Groene gebouwen
- Elektronisch, Batterij gestuurd, Green Building
- Wandmontage
- Aluminium/Chroom
- Temperatuurgreep
- Handdouche
- Terugslagklep, Vuilfilter(s)
- Infrarood sensor, Magneetventiel, Indicatie voor (bijna) lege batterij
- Instellingen zijn aan te passen (met magneet of met magneetsleutel)

Technical data

Flow properties

Flow-rate at 300 kPa (with flow controller) **0.1 l/s**

Technical properties

Hot water supply **max. +70°C**
 Working pressure **100 - 1000 kPa**
 Connection size **G3/4**
 Installation width **CC150**
 Material **Aluminium**

Software settings

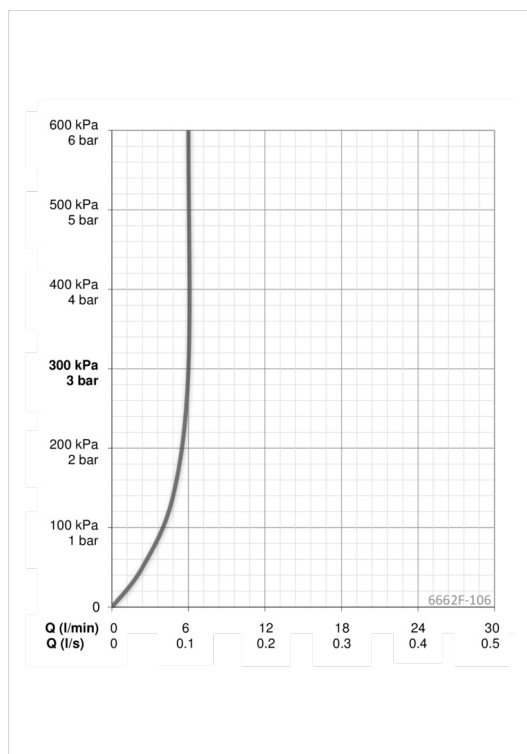
Afterflow period **5 s (0-255 s)**
 Max. flow period **5 min (0 - 30 min)**
 Opening range **0-5 cm**

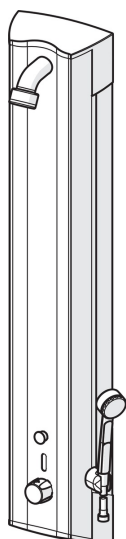
Electronic properties

Battery **Lithium 2CR5 6 V**

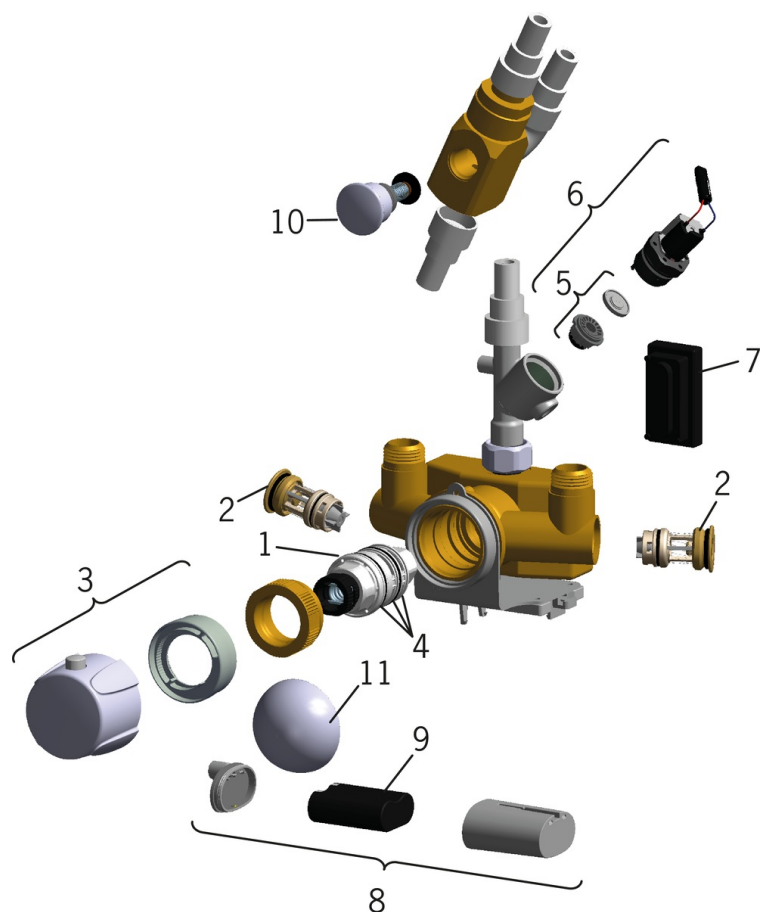
Regulations

EMC Directive **C € 89/336/EEC**
 EN standard **EN 15091**
 Noise class **I (ISO 3822)**
 Protection class **IP 55**





Spare parts



SP6662F

	Name	Code
01	Thermostaat/binnenwerk	178780V
02	Vuilfilters	178295
03	Temperatuur hendel Chroom	178794V
04	O-ring	178796V
05	Membraamhouder	199205V
06	Magneetventiel	199206V
07	Fotocel, 6 V	600202V
08	Patareikarbik kompl.	199417V
09	Lithium batterij, 2CR5 6 V	198330
10	Omsteller Chroom	209695
11	Beschermingskapje Chroom	199276V