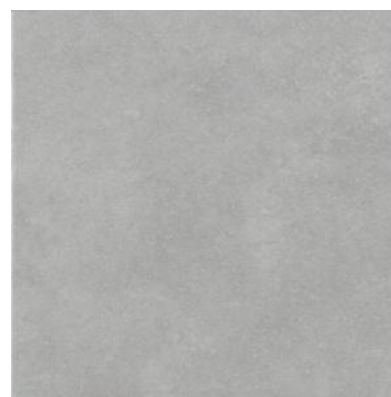



TECHNICAL FEATURES

| |
|--|
| MODEL: ART GRIS |
| SIZE: 22,3x22,3 |
| THICKNESS(mm): 11 |
| DATE: 21/11/2024 |
| CODE: 015.826.0002.00497 |
| GROUP: GRUPO BIa UNE-EN 14411 Anexo G / SASO GSO ISO 13006:2022 Anexo G |
| TILE TYPE: GL |
| FINISH: MATT |
| FAMILY: COMPACGLASS-GLAZED PORCELAIN TILES |
| NUMBER OF DESIGNS: |



| TEST | RESULT | |
|--|---|-----------------------------------|
| UNE-EN ISO 10545-2 DIMENSIONAL FEATURES | COMPLIES WITH THE STANDARD | |
| UNE-EN ISO 10545-3 WATER ABSORPTION | <= 0,5 % | |
| UNE-EN ISO 10545-4 MODULUS OF RUPTURE - BREAKING STRENGTH | 1600-2400 N | |
| | MODULUS OF RUPTURE - BENDING STRENGTH | 35-45 N/mm2 |
| UNE-EN ISO 10545-6 RESISTANCE TO DEEP ABRASION (MM3) | NOT APPLY | |
| UNE-EN ISO 10545-7 RESISTANCE TO SURFACE ABRASION | - | |
| UNE-EN ISO 10545-8 LINEAR THERMAL EXPANSION | <7,0 x 10-6 °C-1 | |
| UNE-EN ISO 10545-9 THERMAL SHOCK RESISTANCE | RESISTS | |
| UNE-EN ISO 10545-11 CRAZING RESISTANCE | RESISTS | |
| UNE-EN ISO 10545-12 FROST RESISTANCE | RESISTS | |
| UNE-EN ISO 10545-13 | CHEMICAL RESISTANCE - AMMONIUM CHLORIDE 100 G/L | A |
| | CHEMICAL RESISTANCE - SODIUM HYPOCHLORITE 20 MG/L | A |
| | CHEMICAL RESISTANCE - HYDROCHLORIC ACID 3% | COMPLIES WITH THE STANDARD |
| | CHEMICAL RESISTANCE - CITRIC ACID 100 G/L | COMPLIES WITH THE STANDARD |
| | CHEMICAL RESISTANCE - POTASSIUM HYDROXYDE 30 G/L | COMPLIES WITH THE STANDARD |
| UNE-EN ISO 10545-14 | STAIN RESISTANCE - GREEN AGENT IN LIGHT OIL | 5 |
| | STAIN RESISTANCE - IODINE SOLUTION IN ALCOHOL | 5 |
| | STAIN RESISTANCE - OLIVE OIL | 5 |

SLIP RESISTANCE

| | TEST | | RESULT |
|--|--------------------------|--|----------------|
|  | UNE 41901:2017 EX | SLIP RESISTANCE (PENDULUM) | CLASE 1 |
| | DIN 51130 | CRITICAL ANGLE OF SLIP (INCLINED PLATFORM) | - |
| | DIN 51097 | CRITICAL ANGLE OF SLIP. WET-LOADED BAREFOOT AREAS | - |
| | BS7976 (PTV) WET | CLASSIFICATION ACCORDING TO PENDULUM TEST VALUES (PTV) WET | - |
| | ANSI A326.3 | DYNAMIC COEFFICIENT OF FRICTION (DCOF) OF RIGID FLOORS. | - |

| TEST | | VALOR UPEC |
|-------------|--------------------|------------|
| UPEC | UPEC CERTIFICATION | - |

Declaration of Performance:

https://www.pamesa.com/ERP/4.0/empresas/151/045/ficheros/t00030006/113/DdP_DoP_N003CPR2013.pdf

TECHNICAL DEPARTMENT
PAMESA CERÁMICA