



Aduro Bio Stove



Welcome in the cosiness

Aduro's range of bio stoves are designed with a timeless and classic visual expression. The round shapes contain the flames beautifully and offer an unobstructed view of the fire. Pour bioethanol, light it and enjoy the magical atmosphere created by the dancing flames. Warmth and cosiness are guaranteed in seconds.

- Timeless Danish design
- Safe filling and operation
- Can be placed wherever you like
- Easy to install, ready for use
(does not require a chimney or power)
- A striking feature in any room
- Minimal cleaning and maintenance
- No smoke, soot or ash
- Generates pleasant warmth
(heats 1.8-3 kW)

Aduro B2 with open front

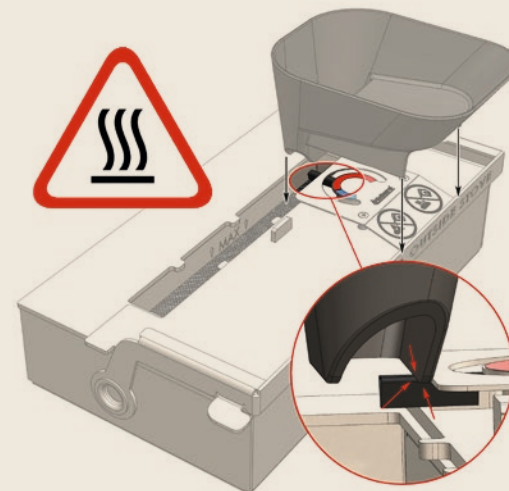


Light it up with peace of mind

We want to create a safe user experience. With the accompanying funnel, filling is easy. The burner is installed with ceramic fibres, which absorb the bioethanol like a sponge, making it easy and safe to light the stove.

Our patent-pending filling system, Aduro Bio-Safe, prevents filling bioethanol when the stove is in use or hot, as the heat-sensitive spring blocks the attachment of the funnel. This ensures safety when using the Aduro Bio Stove.

Aduro Bio Stoves have undergone extensive safety testing and have been tested according to the European standard EN16647:2015.





**Create a cosy
outdoor atmosphere**
Aduro B1 with glass on three sides

Choose your favourite

The round bio stove comes in two versions, all of which can be freely combined with decorative oakwood legs, a metal foot or a wall bracket. Place the bio stove wherever you like. It can also be easily moved around as you see fit.



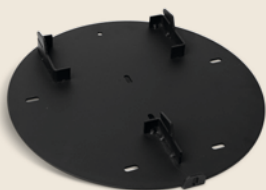
Aduro B1
Glass on three sides



Aduro B2
Open front



Metal foot



Wall bracket



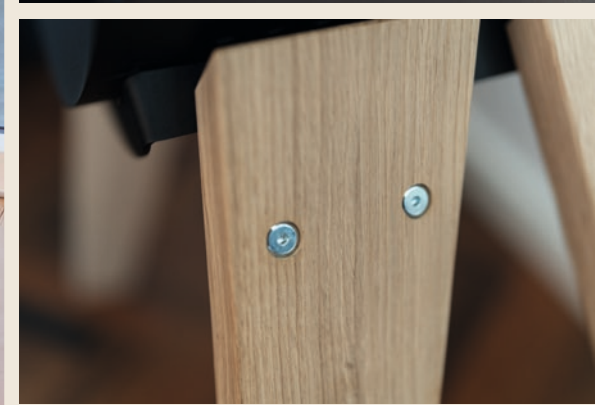
Oakwood legs



Aduro B2 on oakwood legs



Aduro B1 on oakwood legs
and wall bracket



Specifications for the Aduro Bio Stove

Measurements (Ø x H x D)	48 x 47.65 x 35.05 cm
Weight, stove	26 kg
Distance to combustible material behind the stove	2 cm (does not apply to wall-mounting)
Distance to combustible material to the side	15 cm
Distance to combustible material above the stove	20 cm
Wall-mounting	May only be mounted on non-combustible walls
Materials, stove and burner	Powder-coated steel / stainless steel
Material, filler funnel	Recycled plastic from Danish households
Capacity, burner	1.2 L (we recommend 1 L)
Heat efficiency	1.8-3 kW
Burn time	3-4 hours
Minimum room size	80 m ³
Recommended bioethanol	Standard UN:1170, 93-96.5 %

Tested according to the European standard EN16647:2015





Aduro A/S - Beringvej 17 - DK-8361 Hasselager
adurofire.com - aduroshop.com