



RY18PW22A



IMPORTANT!

It is essential that you read the instructions in this manual before assembling, operating, and maintaining the product.

Subject to technical modification.

Safety, performance, and dependability have been given top priority in the design of your cordless power washer.

INTENDED USE

The cordless power washer is intended to clean patio furniture, windows, automobiles, and boats by removal of stubborn dirt using clean water with or without cleaning detergent.

The product is designed for home or domestic use. The product is intended only for outdoor use in well-illuminated conditions.

Use the designated accessory kits for the power washer when using it for any other purpose, such as spraying consumer-grade cleaning solutions and disinfectants.

Do not use the product for any other purpose.

⚠ WARNING! The product is designed for use with a neutral cleaning agent supplied or recommended by the manufacturer. The use of other cleaning agents or chemicals may adversely affect the safety of the product.

NOTE: If using a detergent, refer to the Material Safety Data Sheet of the detergent.

GENERAL SAFETY WARNINGS

⚠ WARNING! Read all safety warnings and all instructions. Failure to follow the warnings and instructions may result in electric shock, fire, and/or serious injury. Save all warnings and instructions for future reference.

⚠ CAUTION! The product must not be used on a drinking water supply without a backflow preventer that corresponds to EN 12729 Type BA. Water that has flowed through a backflow preventer is considered non-drinkable. Always observe the regulations of your local water utility company when connecting the product to a water supply line. Do not connect the product to the public drinking water network.

■ The product is not intended to be used by children or persons with reduced physical, sensory, or mental capabilities or with lack

of experience and knowledge. Children should be adequately supervised to ensure that they do not play with the product.

- Some regions have regulations that restrict the use of the product to some operations. Check with your local authority for advice.
- Wear personal protective equipment when operating the product, such as safety goggles and hearing protection.
- To reduce the risk of injury, keep children and bystanders away. All bystanders should wear safety glasses and be kept at a safe distance from the work area.
- Ensure that the safety devices are in good working condition. Make sure that all safety devices are operating properly before each use.
- Do not use the product if the important parts are damaged, such as safety devices or spray wand.

⚠ WARNING! During the use of power washers, aerosols may be formed. Inhalation of aerosols can be hazardous to health. A respiratory mask of class FFP 2 or equivalent may be needed, depending on the cleaning environment.

⚠ WARNING! Do not turn the nozzle while pulling the trigger. If the water is flowing while the nozzle is turned, the relief channel releases the water. This is not a leak, but allows the water to escape without damaging the product.

⚠ WARNING! High-pressure jet is dangerous if misused. Do not direct the jet to people, live electrical equipment, or the product itself.

- To avoid a risk of explosion, do not spray flammable liquids.
- Do not direct the jet against yourself or others to clean clothes or footwear.
- Hoses, fittings, and couplings are important for the safety of the product. Use only hoses, fittings, and couplings that are recommended by the manufacturer.
- Before each use, check the product for damage. Damaged hoses must be replaced immediately. Ensure that all connections, such as spray wand and nozzle, are secure. Unwind the hose properly so that they may not get twisted or kinked.
- Before starting any cleaning operation, close doors and windows. Clear the area to be cleaned of debris, toys, outdoor furniture, or other objects that could create a hazard.

- Do not use the product in temperatures below 0 °C.
- Do not use acids, alkaline, solvents, flammable materials, bleaches, or industrial-grade solutions in the product. These products can cause physical injuries to the operator and irreversible damage to the product.
- Hold the handle securely with both hands. Expect the handle to move when the trigger is pulled due to reaction forces. Failure to do so could cause loss of control and injury to yourself and others.
- Exercise caution to avoid slipping or falling.
- Keep firm footing and balance at all times. Do not overreach. Overreaching can result in loss of balance and can result in serious injury.
- Never leave the product running unattended. Power off the product. Do not leave the product until it has come to a complete stop. Keep the product out of the reach of children when it is powered on.
- Be familiar with the controls and the proper use of the product. Know how to power off the product and bleed the pressure quickly.
- Stay alert, and exercise control. Watch what you are doing, and use common sense.
- Do not operate the product while tired, ill, or under the influence of drugs, alcohol, or medication. A moment of inattention while operating the product may result in serious personal injury.
- Do not use the product if the switch does not power it on and off. Any product that cannot be controlled with a switch is dangerous and must be repaired.
- Keep a minimum distance of 30 cm when cleaning vehicles. The high-pressure jet may damage or burst vehicle tires or tire valves.
- Do not use the product if it has been dropped, if there are visible signs of damage, or if it is leaking.
- Injuries may be caused, or aggravated, by prolonged use of the product. When using the product for prolonged periods, ensure to take regular breaks.

BATTERY PACK SAFETY WARNINGS

- Recharge the battery pack only with the charger specified by the manufacturer. A charger that is suitable for one type of battery pack may create a risk of fire when used with another battery pack.
- When the battery pack is not in use, keep it away from other metal objects, such as paper clips, coins, keys, nails, screws, or other small metal objects that can make a connection from one terminal to another. Shorting the battery pack terminals together may cause sparks, burns, fire, or an explosion.
- Keep the battery pack and the charger away from wet and damp conditions.
- Use the product only with battery packs specified in this manual. The use of any other battery packs may create a risk of injury and fire.
- Under abusive conditions, liquid may be ejected from the battery pack; avoid contact. If contact accidentally occurs, flush with water. If liquid contacts eyes, seek medical help. Liquid ejected from the battery pack may cause irritation or burns.
- Do not dispose of battery packs together with household waste material. They must be collected separately and returned to an environmentally compatible recycling facility. Check with your local authority or retailer for recycling advice and collection point.
- The battery pack has overheat protection. Excessive temperatures will cause the battery to stop powering the product. If the battery pack is too warm, allow it to cool down before resuming operation. If the product still does not work, recharge the battery pack.

NOTE: The battery pack LED indicator will not work if the battery pack protection feature has caused the battery pack to stop powering the product. Release the on/off trigger or remove the battery pack from the product and the battery pack LED indicator will resume normal function.

ADDITIONAL BATTERY SAFETY WARNINGS

⚠ WARNING! Do not splash water to the product. It may damage the battery pack.

To reduce the risk of fire, personal injury, and product damage due to a short circuit, never immerse the product, battery pack, or charger in fluid or allow fluid to flow inside them. Corrosive or conductive fluids, such as seawater, certain industrial chemicals, and bleach or bleach-containing products, etc., can cause a short circuit.

TRANSPORTATION AND STORAGE

- Power off the product, and remove the battery pack. Allow both to cool down. Disconnect the product from the water supply before storing or transporting.
- Remove water from all hoses and the pump before storing the product.
- Neatly coil the siphon hose, and store it with the power washer.
- Remove all foreign materials from the product. Do not store or transport the product with the battery pack fitted. Remove the battery pack, and secure it separately.
- Store the product in a cool, frost-free, dry, and well-ventilated place that is inaccessible to children. Do not store the product near the furnace or other sources of heat that could dry out the pump seals. Keep the product away from corrosive agents, such as garden chemicals and de-icing salts. Do not store the product outdoors.
- When transporting the product in a vehicle, secure it against movement or falling to prevent injury to persons or damage to the product.

⚠ WARNING! Store the product indoors only. Storing the product in an area with temperature below 0 °C will damage the product.

TRANSPORTING LITHIUM BATTERIES

Transport the battery pack in accordance with local and national provisions and regulations.

Follow all special requirements on packaging and labelling when transporting batteries by a third party. Ensure that no batteries can come in contact with other batteries or conductive materials while in transport by protecting exposed connectors with insulating, non-conductive caps or tape. Do not transport batteries that are cracked or leaking. Check with the forwarding company for further advice.

MAINTENANCE

- Use only original manufacturer's replacement parts, accessories, and attachments. Failure to do so can cause possible injury, can contribute to poor performance, and may void your warranty.
- Servicing requires extreme care and knowledge and should be performed only by a qualified service technician. Have the product serviced by an authorised service centre only.
- Power off the product, and remove the battery pack. Allow both to cool down. Disconnect the product from the water supply. Make sure that all components have come to a complete stop:
 - before cleaning the product
 - before maintaining the product
 - before replacing spare parts
- You may make adjustments and repairs that are described in this manual. For other repairs, have the product serviced by an authorised service centre only.
- Regularly inspect and maintain the product for safe operation. Ensure that the battery compartment is properly assembled and tightly closed, and frequently check for damage. Any part that is damaged should be properly repaired or replaced by an authorised service centre.
- If the product is to be stored unused for a long period, remove the battery pack.

KNOW YOUR PRODUCT

See pages 6–7.

1. Release button
2. Power washer housing
3. Lock-out button
4. Latch
5. Handle grip
6. Switch trigger
7. Battery compartment
8. Water inlet
9. Operator's manual
10. 2-Litre bottle adaptor
11. Extension wand
12. 3-in-1 nozzle
13. Release button
14. Quick connector
15. Siphon hose
16. Floater
17. Filter
18. Battery pack

19. Charger
20. RYOBI detergent

SAFETY DEVICES

- Lock-out button
 - The lock-out button locks the switch trigger and prevents unintentional opening of the high-pressure jet.

SYMBOLS



Safety alert



Read and understand all instructions before operating the product. Follow all warnings and safety instructions.



Wear eye and ear protection.



To reduce the risk of injury from high-pressure injection, do not direct spray at persons or animals.



Kickback. To reduce the risk of injury from kickback, hold the trigger handle securely with both hands when the product is on.



The product is not suitable for connection to the drinking water supply without backflow preventer.



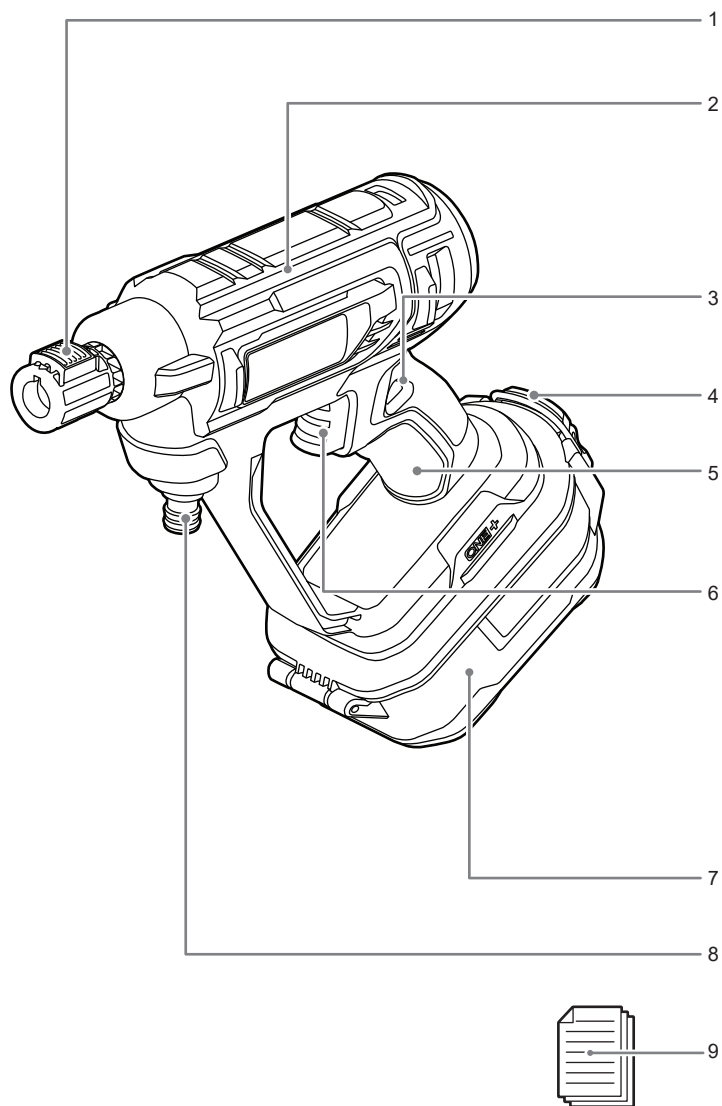
Never point the gun to persons, animals, the product, the power supply, or any electrical appliances.

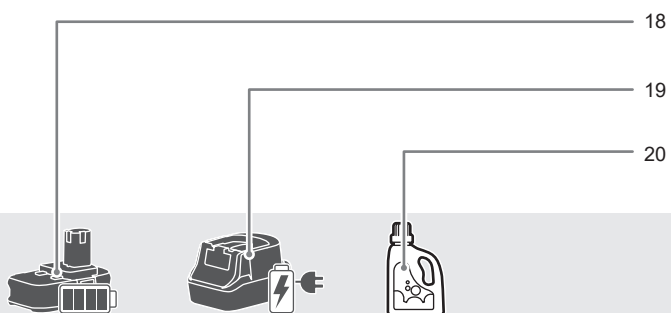
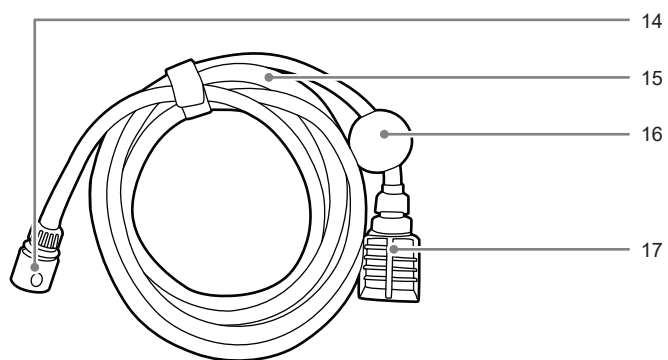
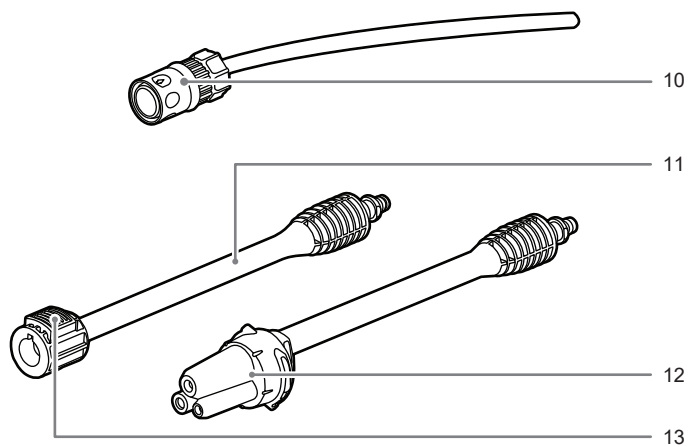


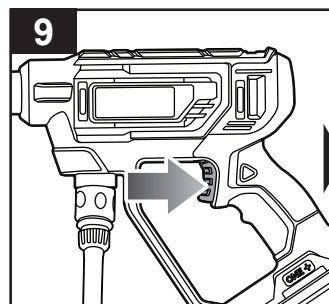
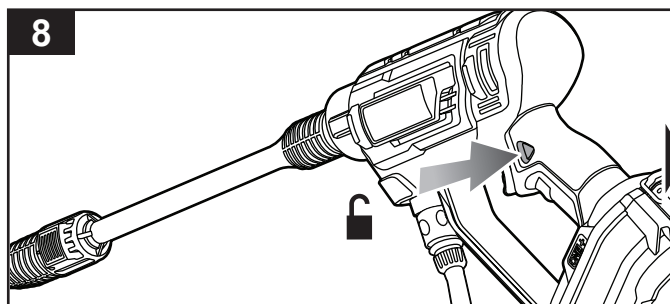
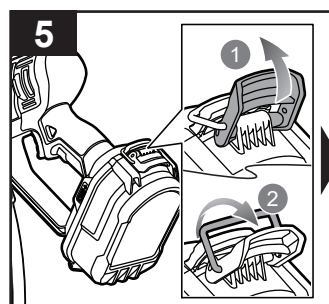
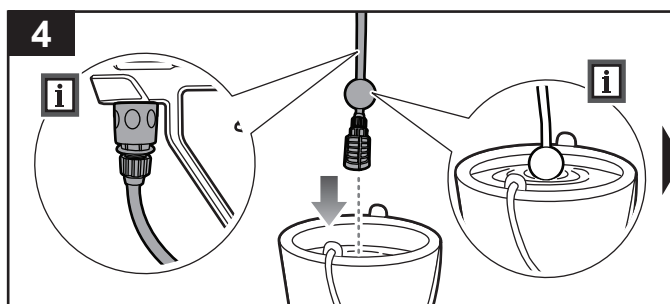
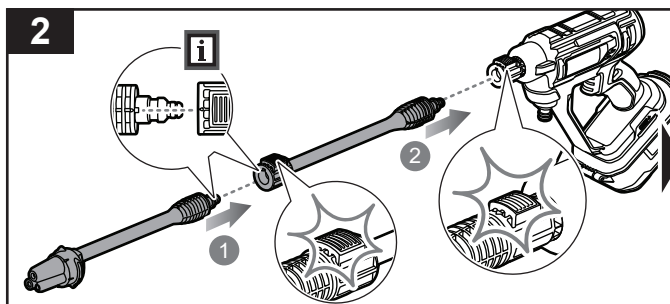
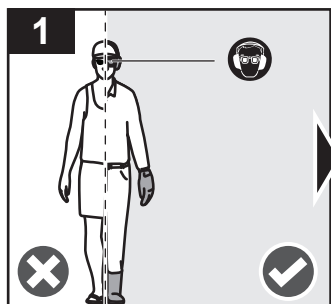
Burst hazard

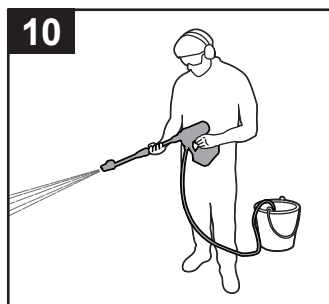
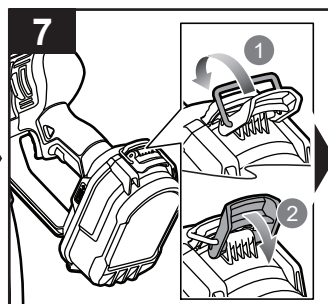
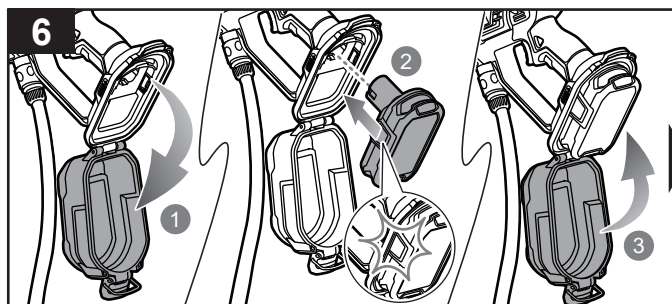
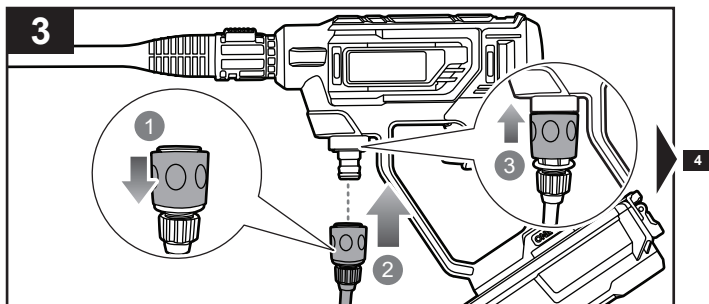
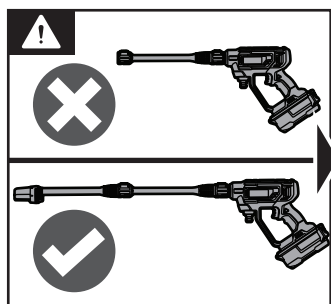


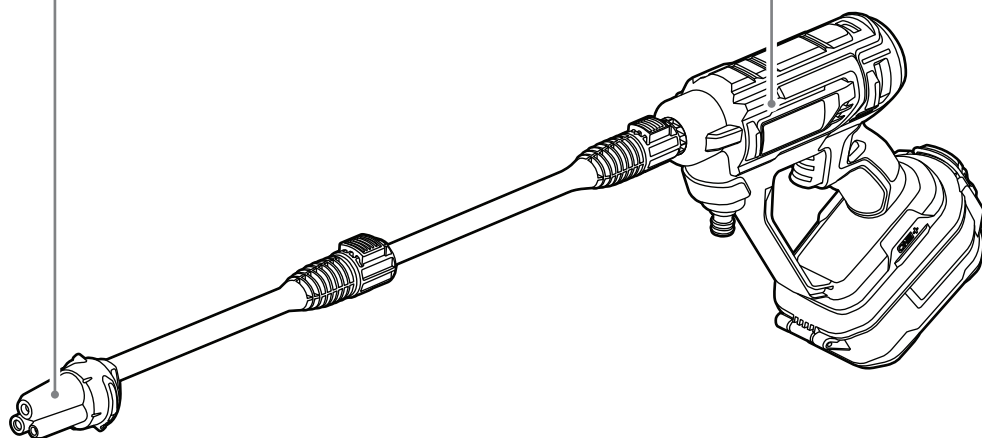
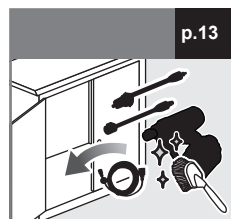
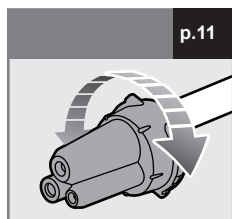
Do not dispose of waste batteries, waste electrical and electronic equipment as unsorted municipal waste. Waste batteries and waste electrical and electronic equipment must be collected separately. Waste batteries, waste accumulators, and light sources have to be removed from the equipment. Check with your local authority or retailer for recycling advice and collection point. According to local regulations, retailers may have an obligation to take back waste batteries and waste electrical and electronic equipment free of charge. Your contribution to the reuse and recycling of waste batteries and waste electrical and electronic equipment helps to reduce the demand of raw materials. Waste batteries, in particular containing lithium, and waste electrical and electronic equipment contain valuable and recyclable materials, which can adversely impact the environment and the human health if not disposed of in an environmentally compatible manner. Delete personal data from waste equipment, if any.

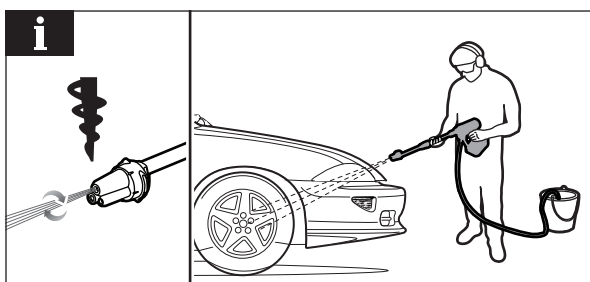
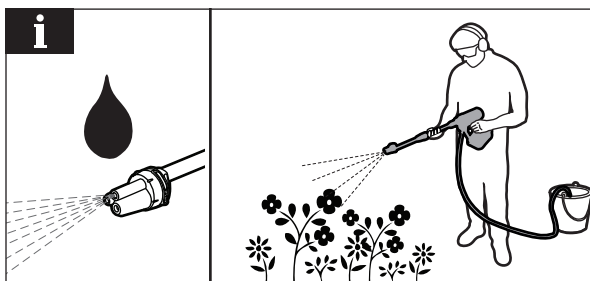
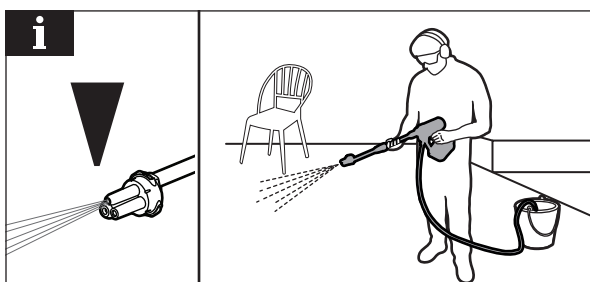
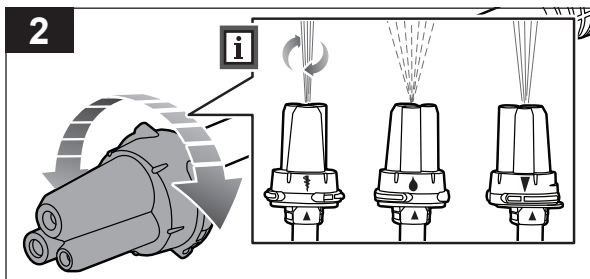
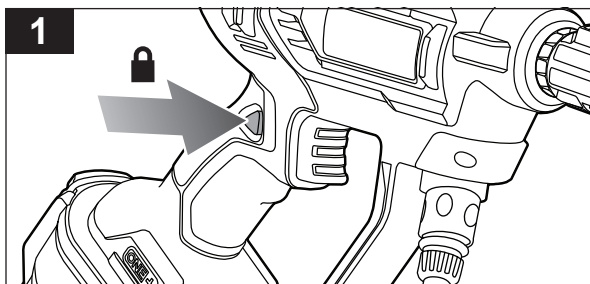
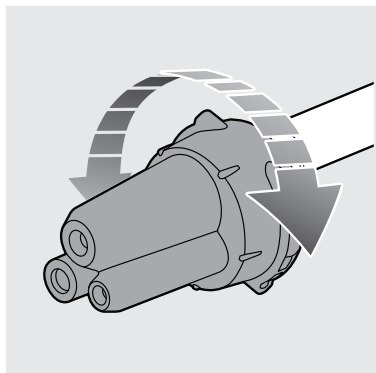


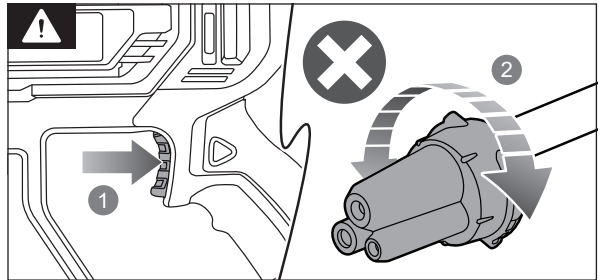
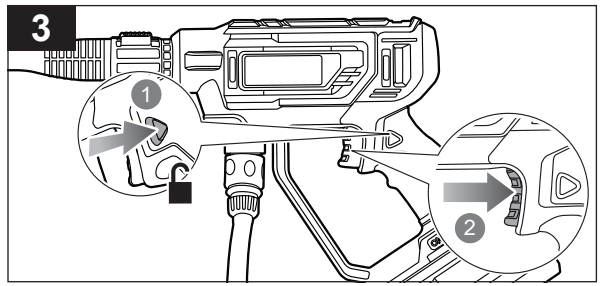


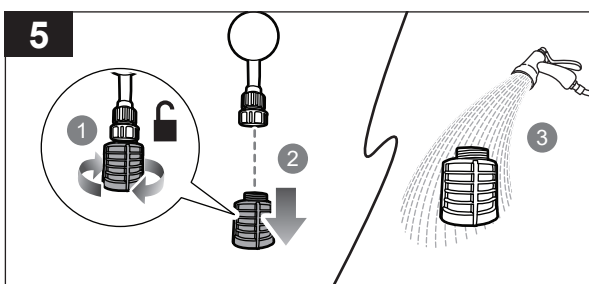
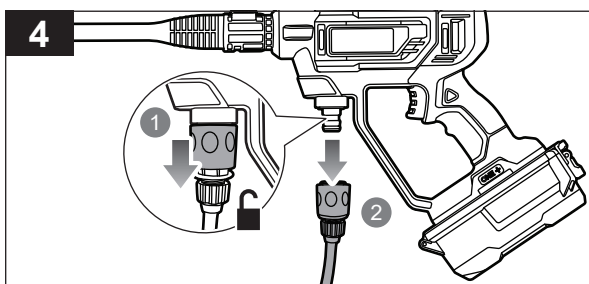
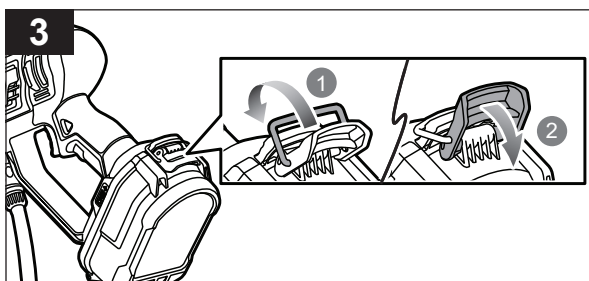
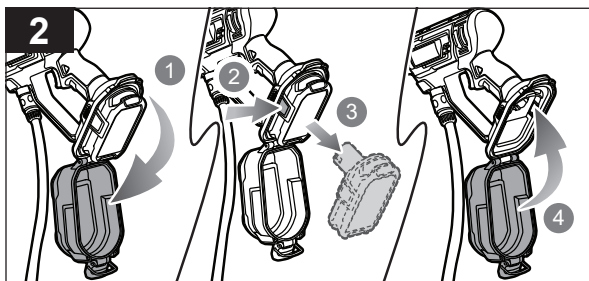
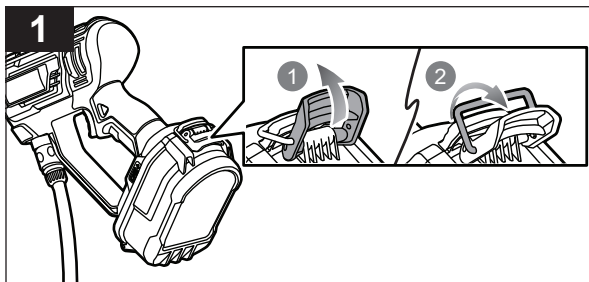


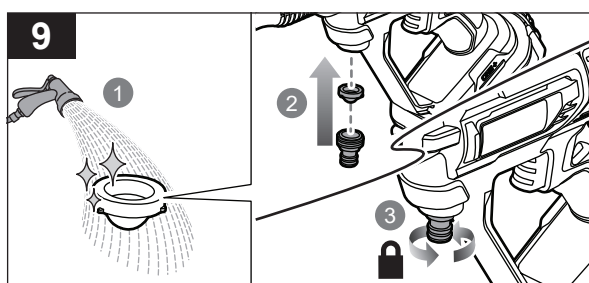
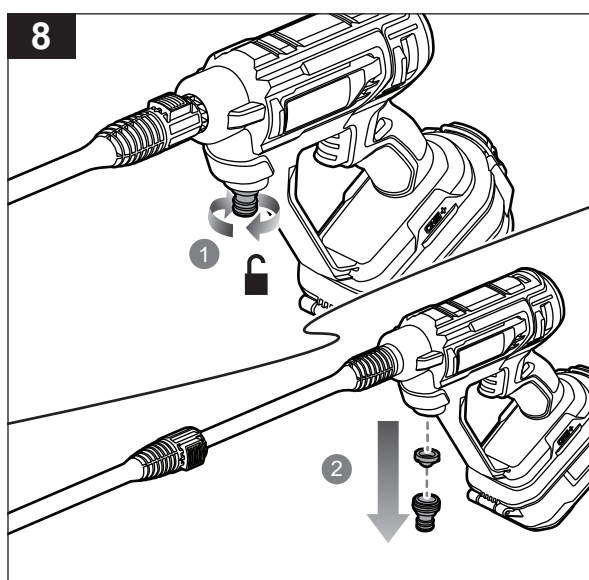
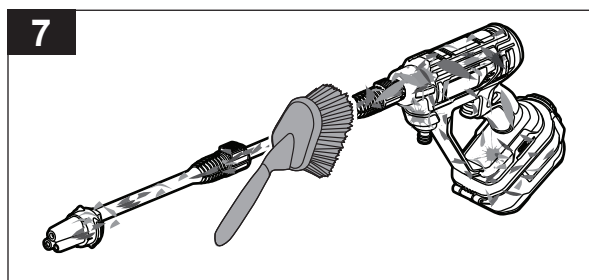
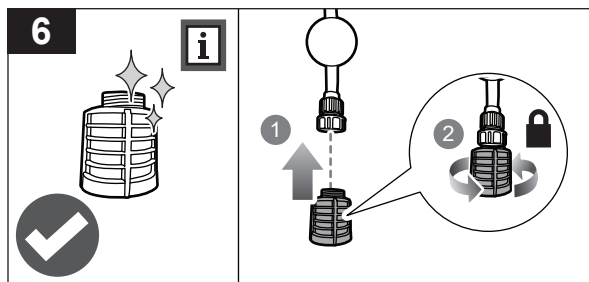


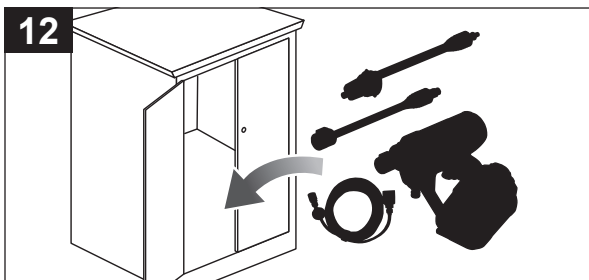
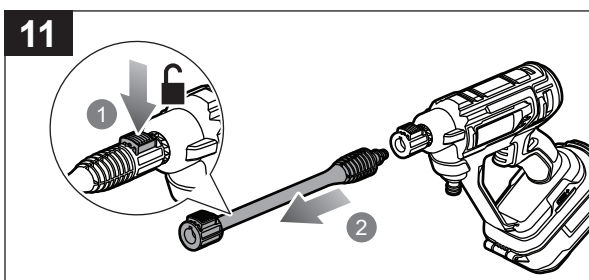
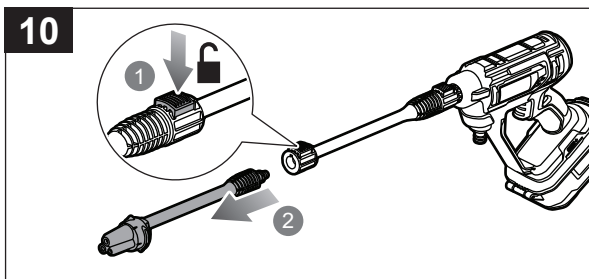
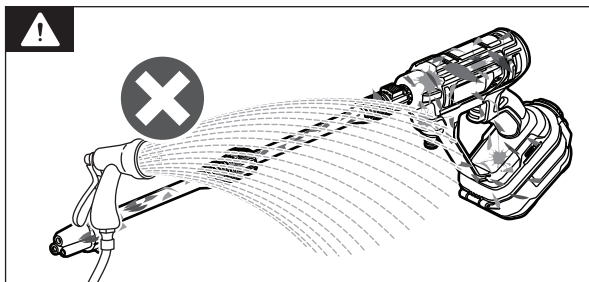












PRODUCT SPECIFICATIONS

Cordless power washer	
Model	RY18PW22A
Rated voltage	18 V d.c.
Weight	2 kg
Maximum pressure	24.8 bar
Rated pressure	22 bar
Dilution ratio	1:20
Rated flow	182 L/hr
Maximum flow	270 L/hr
Maximum inlet water pressure	7 bar
Maximum suction height	1.2 m
Minimum garden hose inner diameter	8 mm
Compatible battery packs	RB18..
Compatible chargers	BCS618G, BCL14181.., RC18..

ACCESSORIES

20-Litre water bag	RAC717
Stone detergent	RAC731
Foam detergent	RAC732
Universal detergent	RAC733
Wood detergent	RAC734
Detergent bottle	RAC748
Wheel brush	RAC749
Multipurpose brush	RAC750
2-Litre bottle adaptor	RAC751
Misting kit	RAC754
Squeegee	RAC763
Pivoting adaptor	RAC764
Rinsing nozzle	RAC765
Extension pole	RAC768
Extension siphoning kit	RAC769
Quick-connect kit	RAC770
3-in-1 nozzle	RAC771

RYOBI GUARANTEE APPLICATION CONDITIONS

In addition to any statutory rights arising from the purchase of a product and without prejudice on the statutory rights which apply independently and free of charge, all new RYOBI branded power tools and/or garden tools listed on our website, excluding tool accessories, tool storage systems, and spare parts, as further outlined under ("Product"), are covered by a voluntary guarantee issued by Techtronic Industries GmbH ("TTI") subject to the terms and conditions as stated below ("Guarantee").

The Guarantee is only applicable to purchaser(s) who purchase the products as end users in their capacity as consumers ("Consumer"). Retailers, rental companies, as well as professional end users are expressly excluded from these general terms and conditions of the Guarantee. For professional end users, a different type of voluntary guarantee may be applicable to certain product(s), if explicitly provided on the www.ryobitools.eu website. The invocation of this voluntary Guarantee does not limit the statutory legal rights of the Consumer in case of a defect.

1. The standard guarantee ("Standard Guarantee"), provided that the Product is purchased for private use only, has a term of 24 months ("Standard Guarantee Period") and commences on the date the product was purchased. This date must be documented by an invoice or other proof of purchase in order for the Standard Guarantee to be valid and enforceable. This Standard Guarantee also only applies to new Product(s).
2. Consumers in certain countries may be able to extend the Standard Guarantee for eligible Products beyond the period of the Standard Guarantee by registering on the www.ryobitools.eu website. The eligibility of Products for the extended guarantee ("Extended Guarantee") is specified on the packaging of a Product, on the website at www.ryobitools.eu, and/or is contained within the relevant Product documentation under <https://www.ryobitools.eu/>. In order to benefit from the Extended Guarantee, Consumers are required to register their Product(s) online within 30 calendar days from the date of purchase to benefit from this Extended Guarantee. All personal information of a Consumer will be processed in accordance with the privacy statement, which can be found here <https://uk.ryobitools.eu/footer-links/privacy-policy/>. The registration confirmation receipt, which is sent out by e-mail, and the original invoice showing the date of purchase will serve as proof of the Extended Guarantee.
3. The Standard Guarantee and the Extended Guarantee ("Guarantees") are limited to repair and/or replacement of the defective Product at the discretion of TTI provided that the defect in workmanship or material existed at the date of purchase. No further costs or losses can be claimed. In addition, the Guarantees do not apply to:
 - any damage caused accidentally, wilfully, or negligently by the Consumer
 - any damage to the Product that is the result of improper treatment or lack of maintenance
 - any Product that has been altered or modified
 - any Product where original identification (trade mark, serial number) markings have been defaced, altered or removed
 - any damage caused by non-observance of the instruction manual
 - Products, which are not subject to a CE/UKCA marking
 - any Product that has been attempted to be repaired by a non-authorised service centre or without prior authorisation by TTI
 - any Product connected to improper power supply (amps, voltage, frequency)
 - any Product used with inappropriate fuel mixture (fuel, oil, ratio of oil)
 - any damage caused by external influences (water, chemical, physical, shocks) or foreign substances
 - normal wear and tear of spare parts
 - inappropriate use, overloading of the Product(s)
 - use of non-approved accessories or parts
 - power tool accessories provided with the tool or purchased separately. Such exclusions including but not limited to screw driver bits, drill bits, abrasive discs, sand paper and blades, lateral guide
 - components (parts and accessories) which are subject to normal wear and tear, including but not limited to service and maintenance kits, carbon brushes, bearings, chuck, SDS drill bit attachment or reduction, power cord, auxiliary handle, transport carry case, sanding plate, dust bag, dust exhaust tube, felt washers, impact wrench pins and springs, bump knobs, drive belts, clutch, blades of hedge trimmers or lawnmowers, harness, cable throttle, tines, felt washers, hitch pins, blower fans, blower and vacuum tubes, vacuum bag and straps, guide bars, saw chains, hoses, connector fittings, spray nozzles, wheels, spray wands, inner reels, outer spools, cutting lines, spark plugs, air filters, gas filters, mulching blades, etc.
4. For guarantee servicing, the Product(s) must be sent or presented without undue delay after occurrence or recognition of the defect in workmanship or material to an authorised RYOBI service partner listed on the following website <https://www.ryobitools.eu/>. Consumers can obtain the services under the Guarantees from a RYOBI service partner by a. contacting the retailer where the purchase was made; or b. registering via the service platform available on the RYOBI Commercial webpage <https://www.ryobitools.eu/>, the availability of the process might vary from country to country. When sending a Product to an authorised RYOBI service partner, the Product shall be safely packaged without hazardous contents (for details, please see the safety instructions on the website at <https://www.ryobitools.eu/>), marked with sender's address and accompanied by a short description of the defect. Please note that in some countries delivery charges or postage will have to be paid by the sender according to local practice. Please consult your local authorised RYOBI service centre to confirm whether such charges apply.
5. Upon receipt of the Product claimed to be defective by the Consumer, it will be inspected. When the defect has been confirmed, the services under the Guarantees will be provided by repairing the defective parts of the products or replacing them by non-defective parts at TTI's discretion. If TTI refuses to repair the defect or if, at TTI's discretion, the repair has failed, an equivalent replacement will be supplied. The replaced Product(s) or part(s) will become the property of TTI. Any repair/replacement(s) under the Guarantees above are free of charge. The repair/replacement(s) conducted by TTI do not constitute an extension or a new start of the Guarantees. The replaced spare parts are subject to the Guarantees originally given and the period for the Guarantees will end with period for the Guarantee that was originally given for the entire product.
6. The RYOBI Guarantees are granted by Techtronic Industries GmbH, Max-Eyth-Str.10, 71364 Winnenden, Germany, only to the Consumer that originally purchased the Product and may not be transferred or assigned.
7. The Guarantees are valid in the European Economic Area (EEA), Switzerland, and the United Kingdom. Outside these areas, please contact the retailer where the purchase was made to find out if another voluntary guarantee applies.

EU DECLARATION OF CONFORMITY

Manufacturer: Techtronic Industries GmbH
Max-Eyth-Straße 10, 71364 Winnenden, Germany

We declare as the manufacturer under our sole responsibility that the product mentioned below

Cordless power washer
Brand: RYOBI
Model number: RY18PW22A
Serial number range: 47575102000001 - 47575102999999

fulfills all the relevant provisions of the following European Directives, European Regulations and harmonized standards:

2014/35/EU, 2014/30/EU, 2011/65/EU,
EN IEC 55014-1:2021, EN IEC 55014-2:2021,
EN 60335-1:2012+A11:2014+A13:2017+A1:2019+A14:2019+A2:2019
+A15:2021, EN 60335-2-54:2008+A11:2012+A1:2015+A12:2021+A2:2021,
EN 62233:2008, EN IEC 63000:2018



Todd Chipner
Senior Vice President, Quality – Asia
Winnenden, May 12, 2025

Authorised to compile the technical file:
Techtronic Industries GmbH
Max-Eyth-Straße 10, 71364 Winnenden, Germany

GB-DECLARATION OF CONFORMITY

Manufacturer: Techtronic Industries GmbH
Max-Eyth-Straße 10, 71364 Winnenden, Germany

We declare as the manufacturer under our sole responsibility that the product mentioned below

Cordless power washer
Brand: RYOBI
Model number: RY18PW22A
Serial number range: 47575102000001 - 47575102999999

fulfills all the relevant provisions of the following Regulations: S.I. 2016/1091 (as amended), S.I. 2012/3032 (as amended), S.I. 2016/1101 (as amended), and that the following designated standards have been used:

BS EN IEC 55014-1:2021, EN IEC 55014-2:2021,
BS EN 60335-1:2012+A15:2021, BS EN 60335-2-54:2008+A12:2021,
BS EN 62233:2008, BS EN IEC 63000:2018

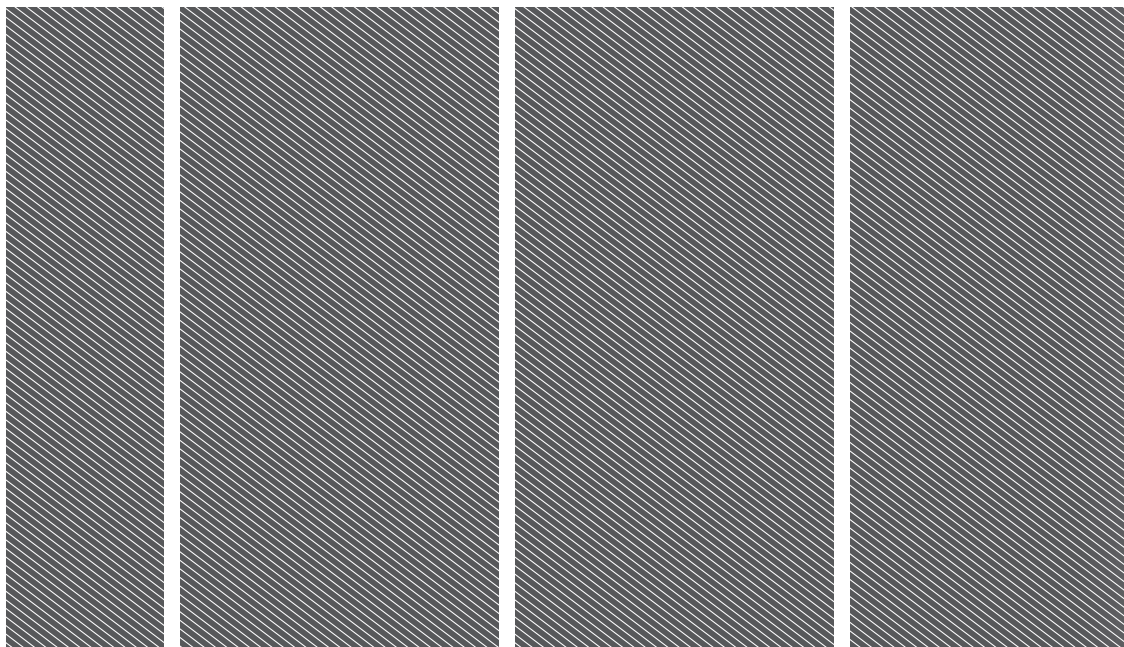


Todd Chipner
Senior Vice President, Quality – Asia
Winnenden, May 12, 2025

Authorised to compile the technical file:
Techtronic Industries (UK) Ltd
Parkway
Marlow Bucks SL7 1YL
UK







Techtronic Industries GmbH
Max-Eyth-Straße 10,
71364 Winnenden, Germany

Techtronic Industries (UK) Ltd
Parkway
Marlow Bucks SL7 1YL
UK

961068257-03

