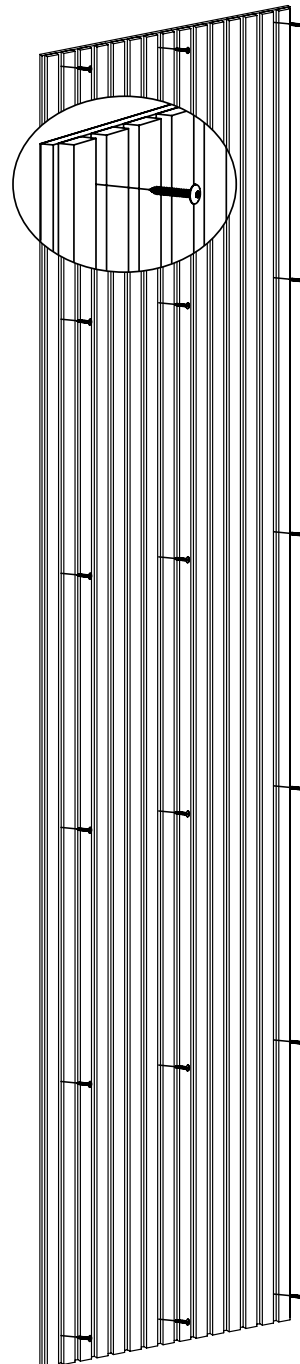
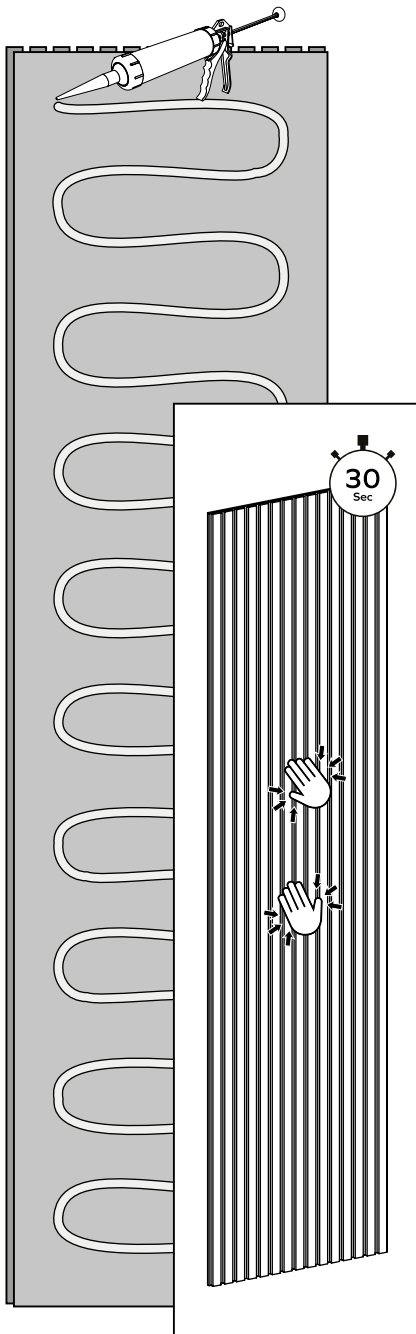


Installation Guide - Method 1

Directly on the wall

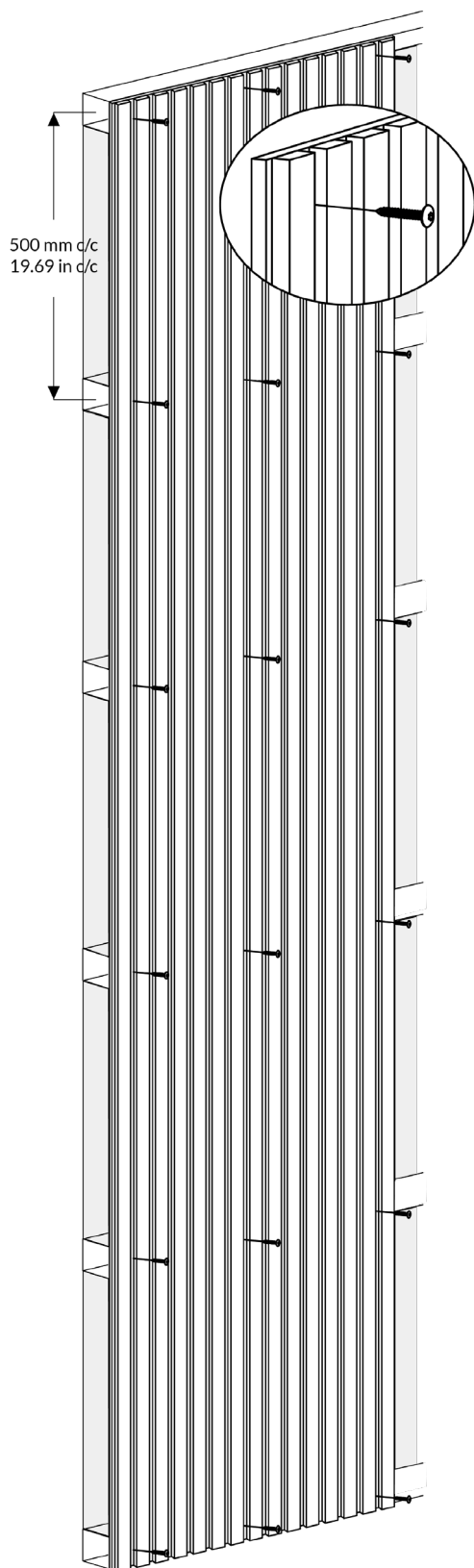
Mounting adhesive: Apply the adhesive to the panel and place it against the wall. Ensure it is firmly pressed.

Screws: Screw the panel through the felt and into the wall. We recommend using 18 screws per panel. Remember to use wall plugs if your wall type requires it.



Installation Guide - Method 2

On a batten



On a batten: For optimal sound absorption, set up a batten with 45 mm (1.77 in) battens on your wall. We recommend a spacing of 500 mm (23.62 in) between your battens. Insert mineral wool between the battens. Screw the panel onto the battens through the felt.

Panel adaptation: If you need to customize the panels in width or length, we recommend using a plunge saw or circular saw for cutting.

Kronoflooring GmbH · Mühlbacher Straße 1
01561 Lampertswalde, Germany
Tel: +49 3522 33-30 · Fax: +49 3522 33-399
info@krono-original.com

kronoSPANO